

Certificate

Certified Passive House component

for cool-temperate climate, valid until 31.12.2026

Passive House Institute
64283 Darmstadt
GERMANY

Category: **Facade anchor**
Manufacturer: **fischerwerke GmbH**
72178 Waldachtal
GERMANY
Product name: **FLH R**

The following criteria were used in
awarding this certificate:

Efficiency Criterion

In a typical application*, the construction fulfills the requirements of

$$\text{Eff}_{\text{fa}} \leq 0.200 \text{ W/(kNK)}$$

Comfort Criterion

The inner surface must be warm enough to prevent mold as well as uncomfortable down-drafts and radiation losses.

$$\theta_{\text{i,min}} \geq 17^{\circ}\text{C}$$

Thermal data of the certified component

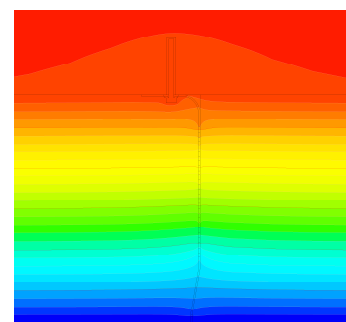
fischerwerke GmbH - FLH R	Thermal bridge coefficient **	Minimum interior surface temperature
	χ [W/K]	$\theta_{\text{i,min}}$ [°C]
FLH 70 F-SP R (SP)	0.0044	19.28
FLH 70 F-SP R (FP)	0.0044	19.28
FLH 147 F-SP R (FP)	0.0093	19.22

* The criterion has been validated with a representative facade of a school building

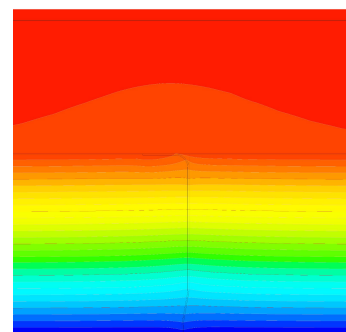
** The thermal bridge loss coefficients refer to a version without a thermal separator

www.passivehouse.com

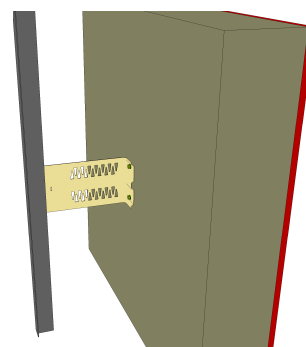
1833fa03



Isothermal map of the
sliding point



Isothermal map of the
large fixed point



Representation large
fixed point

cool, temperate climate



**CERTIFIED
COMPONENT**

Passive House Institute

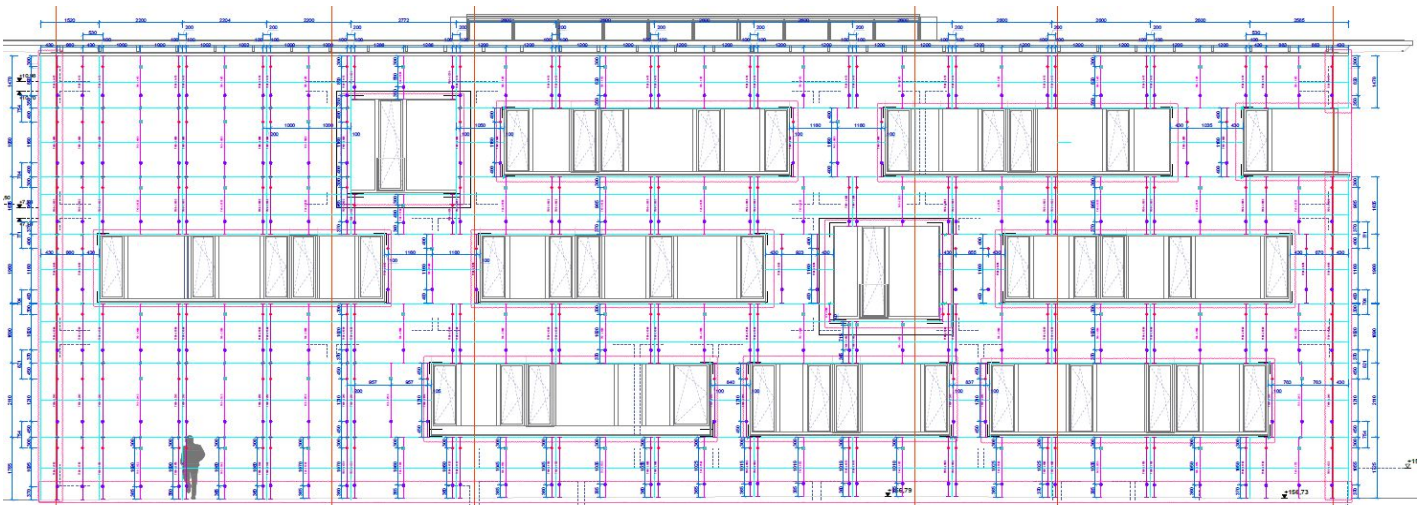
Data sheet fischerwerke GmbH, FLH R

Manufacturer fischerwerke GmbH, Klaus-Fischer-Str.1, 72178 Waldachtal
 Tel.: +49 7443 12-0
 facades@fischer.de
 www.fischer-international.com/en/products/facade-systems

Criteria validated based on reference facade	ΔU [W/(m ² K)]
LC V	0.009
LC VI	0.013

In order to validate the suitability, the manufacturer provides a static calculation and an associated installation plan for the reference facade.

Load class / Facade weight		Thermal bridge coefficients [W/K]		
LC	[kN/m ²]	X _{FLH 70 F-SP R (SP)}	X _{FLH 70 F-SP R (FP)}	X _{FLH 147 F-SP R (FP)}
V	0.30	0.0044	0.0044	0.0093
Efficiency	ΔU	Quantity / m ²		
[W/(kNk)]	[W/(m ² K)]	FLH 70 F-SP R (SP)	FLH 70 F-SP R (FP)	FLH 147 F-SP R (FP)
0.0298	0.0089	0.720	0.220	0.510



Installation-plan reference facade of the certified component (LC V)

Load-class (LC)	Facade cladding	Facade weight [kN/m ²]	Efficiency criterion fulfilled?
I	Aluminium	0.10	yes
II	ACM Cladding	0.15	yes
III	HPL Cladding	0.20	yes
IV	Fibre cement board	0.25	yes
V	Fibre cement board heavy	0.30	yes
VI	Natural Stone	0.50	yes

The classification criteria and the load class allocation can be found in the current criteria "Certified Passive House Components – Façade Anchor, Version 2.1, 19.05.2021".