

Certificate

Certified Passive House component

for cool, temperate climate, valid until 31.12.2026

Passive House Institute
Dr. Wolfgang Feist
64283 Darmstadt
GERMANY

Category: **Facade anchor**
Manufacturer: **BWM Fassadensysteme GmbH**
70771 Leinfelden- Echterdingen
Product name: **ZeLa bracket**
with stainless steel guide bar

The following criteria were used in
awarding this certificate:

Efficiency Criterion

In two typical applications*, the construction fulfills the
requirements of

$$\Delta U_{WB} \leq 0.010 \text{ W/(m}^2\text{K)}$$

Comfort Criterion

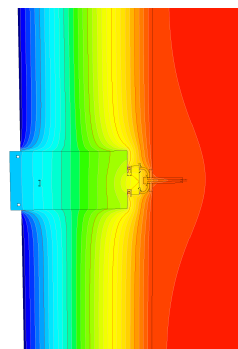
The inner surface must be warm enough to prevent mould as
well as uncomfortable down-drought and radiation losses.

$$\theta_{i,min} \leq 17^\circ\text{C}$$

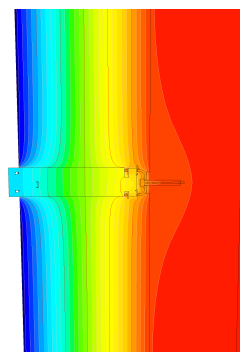
Thermal data of the certified component

ZeLa	thermal bridge coefficient	minimum inner surface temperature
	χ [W/K]	$\theta_{i,min}$ [°C]
Fixed point	0.0101	19.34
Sliding point	0.0065	19.39
Fixed point small	0.0065	19.39

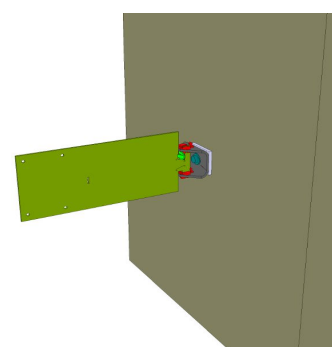
* The criterion has been validated with two representative building
a row house and a school building.



Isothermal map of the
fixed point



Isothermal map of the
sliding point



Representation of the
fixed point

cool, temperate climate



**CERTIFIED
COMPONENT**

Passive House Institute