

# Certificate

## Certified Passive House component

for cool, temperate climate, valid until 31.12.2026

Passive House Institute  
Dr. Wolfgang Feist  
64283 Darmstadt  
GERMANY

Category: **Facade anchor**  
Manufacturer: **BWM Fassadensysteme GmbH**  
70771 Leinfelden- Echterdingen  
Product name: **ZeLa - Click**

The following criteria were used in  
awarding this certificate:

### Efficiency Criterion

In two typical applications\*, the construction fulfills the  
requirements of

$$\Delta U_{WB} \leq 0.010 \text{ W/(m}^2\text{K)}$$

### Comfort Criterion

The inner surface must be warm enough to prevent mould as  
well as uncomfortable down-drafts and radiation losses.

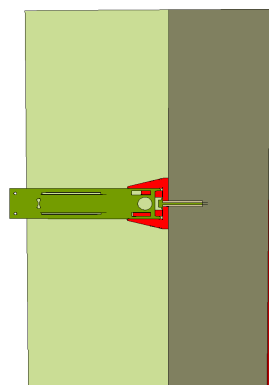
$$\theta_{i,min} \geq 17^\circ\text{C}$$

### Thermal data of the certified component

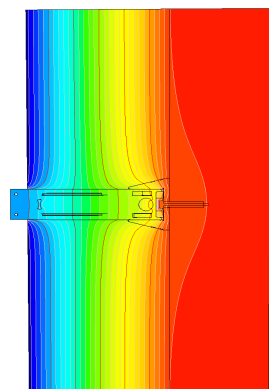
BWM ZeLa - Click	thermal bridge coefficient	minimum inner surface temperature
	$\chi$ [W/K]	$\theta_{i,min}$ [°C]
non corrosive steel	0.0055	19.41

Validation reference buildings	Row House	School building
$\Delta U$ [W/m²K]	0.0069	0.0053

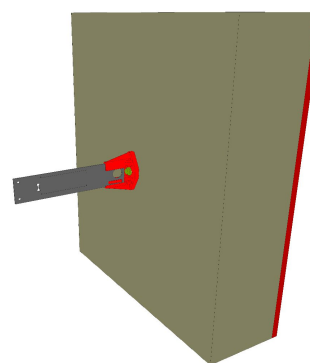
\* The criterion has been validated with two representative building  
a row house and a school building.



Representation of the  
ZeLa - Click



Isothermal map of the  
ZeLa - Click



Representation of the  
ZeLa - Click

cool, temperate climate



**CERTIFIED  
COMPONENT**

Passive House Institute