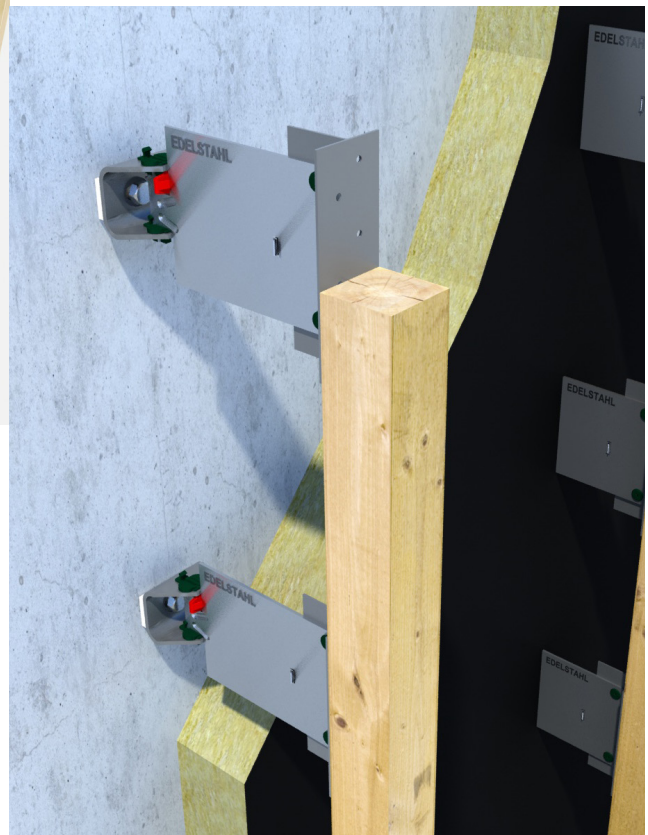


# Holzhalter Technische Informationen

## Wood holder Technical Information

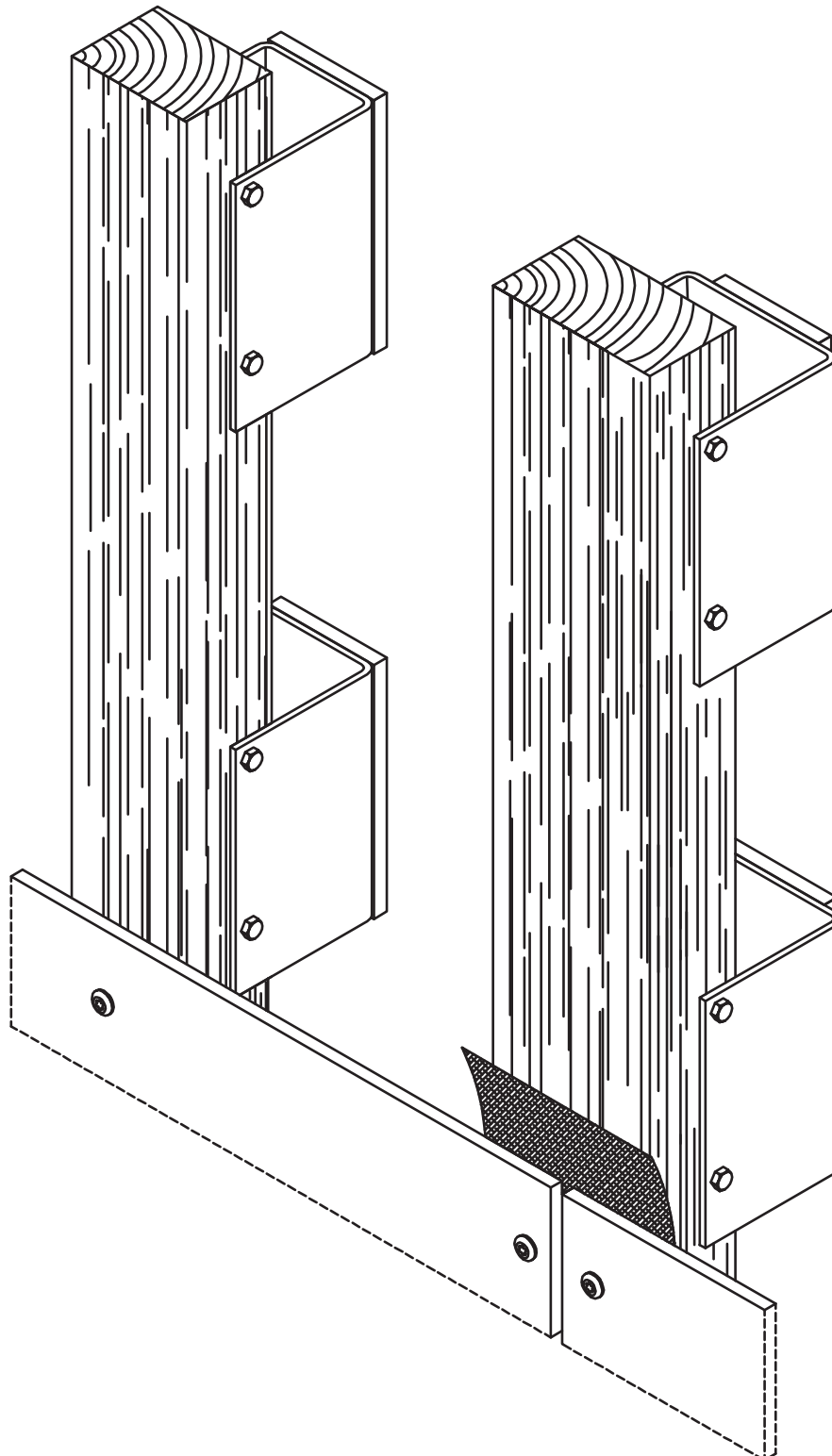


## Konstruktionsbeispiel

### Construction example

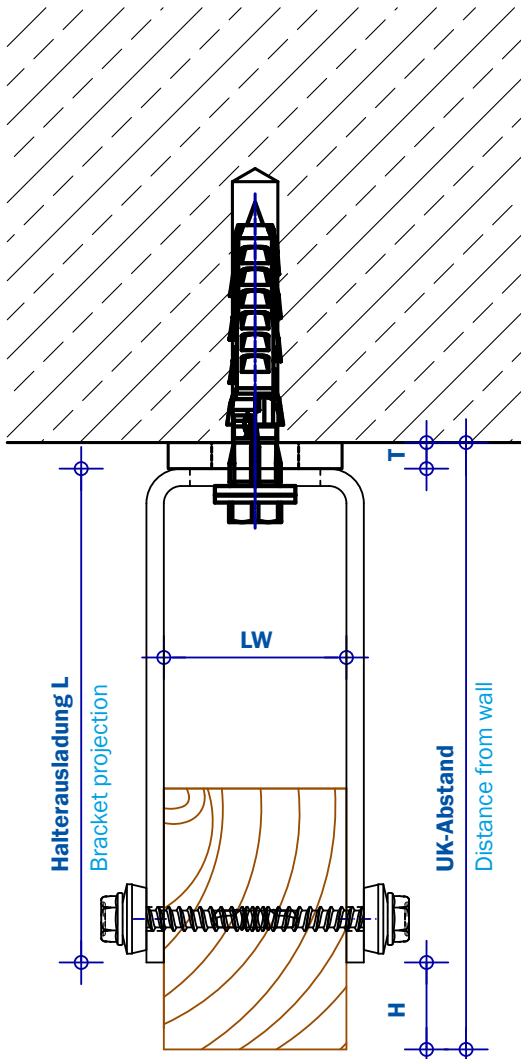
**Ebene Fassadentafeln, sichtbar befestigt**

Plane facade panels, visible fixing



# Wandabstände

## Distance from the wall



Halterausladung L (mm) Bracket projection L (mm)	UK-Abstand (mm) Distance from the wall (mm)
80	80 + T + H
100	100 + T + H
120	120 + T + H
140	140 + T + H
160	160 + T + H
180	180 + T + H
200	200 + T + H
220	220 + T + H
240	240 + T + H
260	260 + T + H
280	280 + T + H
300	300 + T + H
320	320 + T + H

**Sonderlängen und Sonderhalter auf Anfrage**  
Special lengths and special brackets on demand

**T = Dicke BWM-Thermostop, T = 6 mm**

T = Thickness of the BWM-Thermal separating layer, T = 6 mm

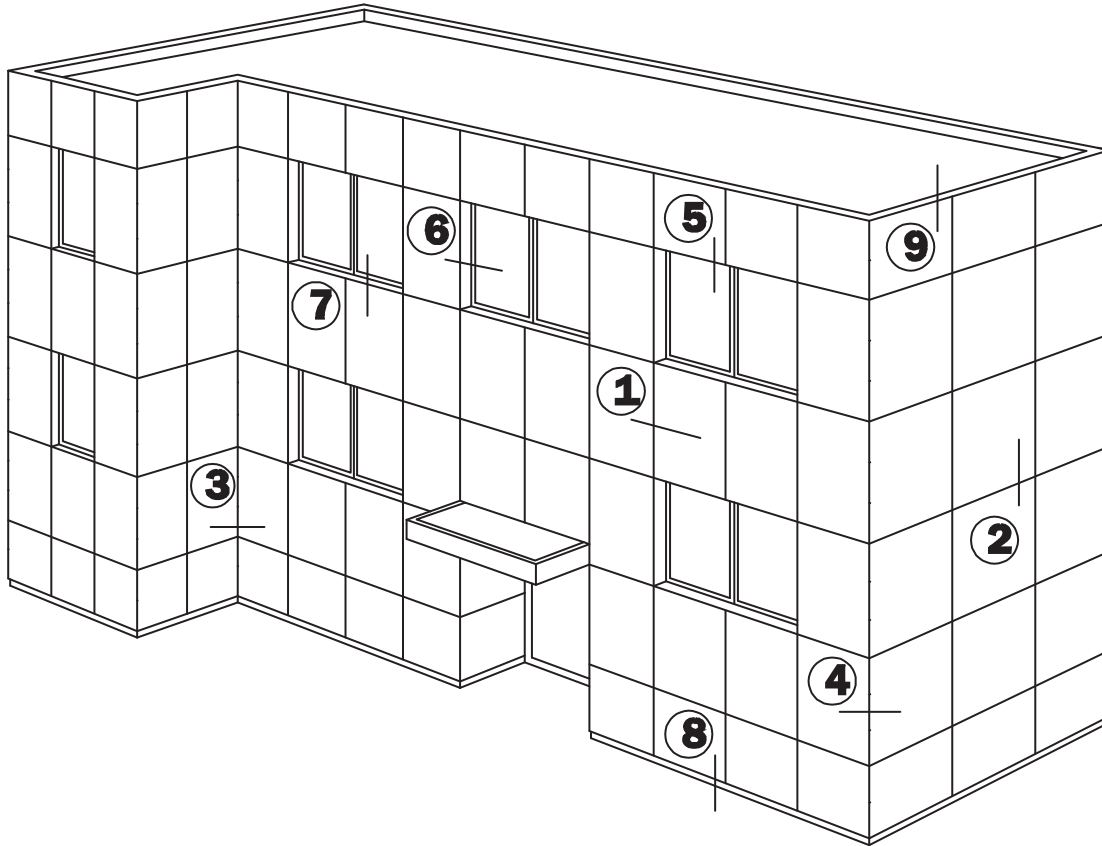
**LW = 40 / 50 / 60 / 80 / 100**

**Bei geringen Wandabständen können die Kopfabmessungen des Verankerungselements maßgebend sein**

In case of low distances from wall the head sizes of the anchoring elements can be relevant

# Schnittübersicht

## Section overview



**Schnitt 1**  
Section 1

**Horizontalschnitt**  
Horizontal section

**Schnitt 6**  
Section 6

**Fensterleibung**  
Window embrasure

**Schnitt 2**  
Section 2

**Vertikalschnitt**  
Vertical section

**Schnitt 7**  
Section 7

**Fensterbank**  
Window sill

**Schnitt 3**  
Section 3

**Innenecke**  
Internal corner

**Schnitt 8**  
Section 8

**Sockelabschluss**  
Lower edge (bottom end)

**Schnitt 4**  
Section 4

**Außenecke**  
External corner

**Schnitt 9**  
Section 9

**Attikaabschluss**  
Attic connection (top end)

**Schnitt 5**  
Section 5

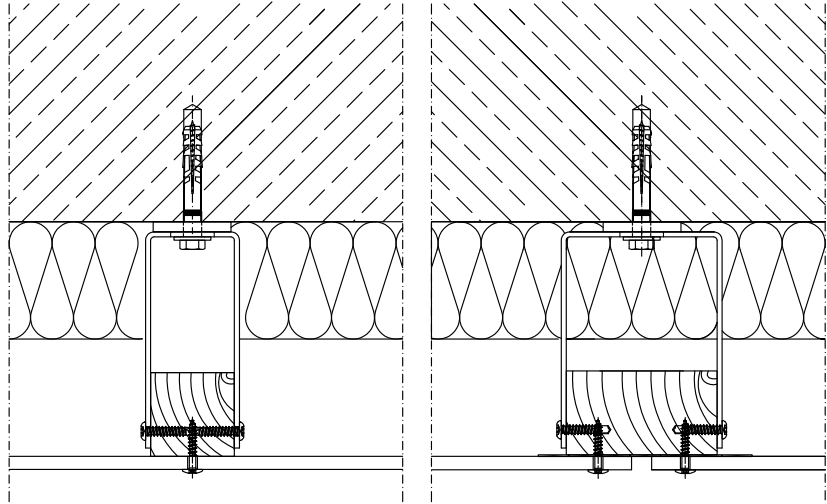
**Jalousiekasten**  
Roller-blind box

# Schnitte

## Sections

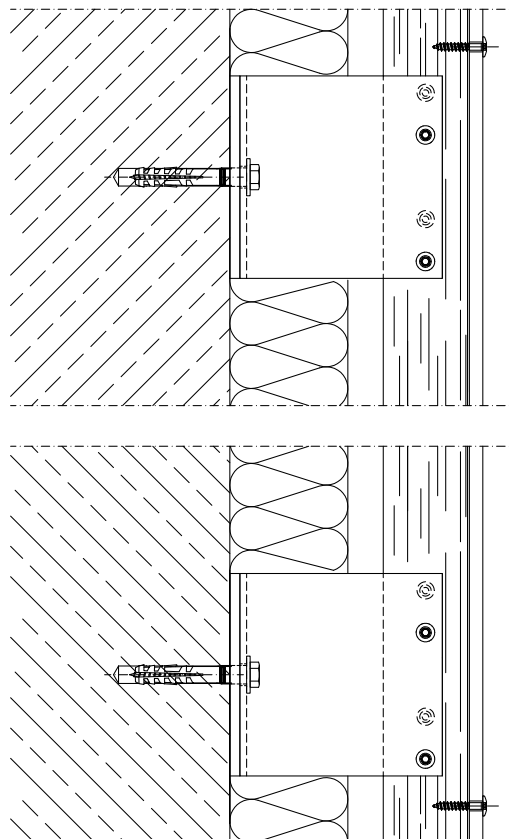
### Schnitt 1 Horizontalschnitt

#### Section 1 Horizontal section



### Schnitt 2 Vertikalschnitt

#### Section 2 Vertical section



Angrenzende Bauteile sind hier nur schematisch dargestellt. Die konkrete Detailausbildung ist unter Beachtung von Normen, Vorschriften und Richtlinien objektbezogen separat zu planen.

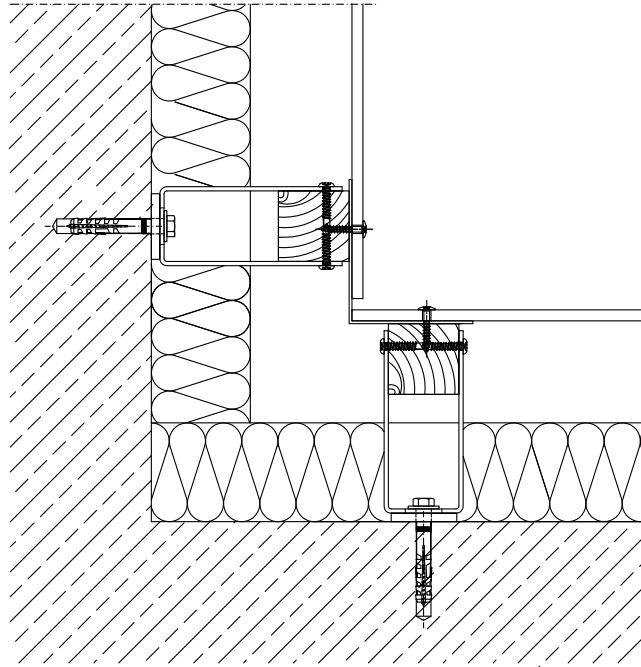
Adjacent components are shown here only schematically. The concrete details are to be planned separately in respect of the particular building involved. This must be done in accordance with the relevant standards, regulations and guidelines.

# Schnitte

## Sections

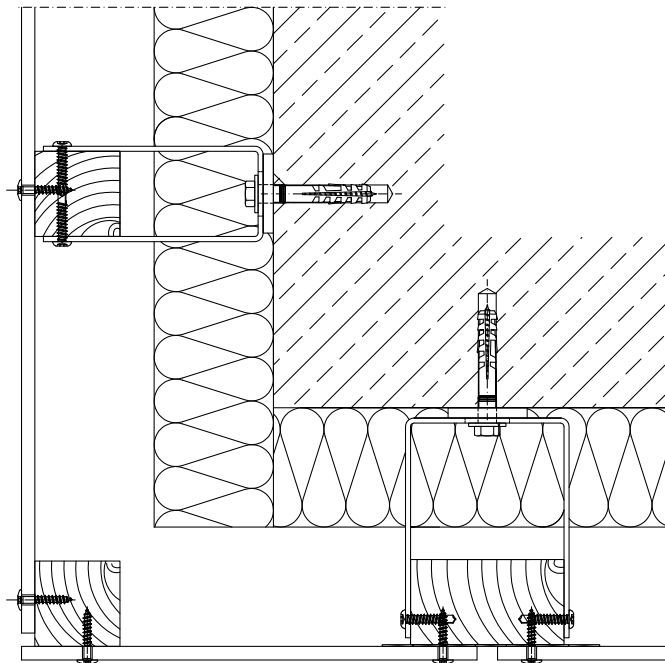
### Schnitt 3 Innenecke

#### Section 3 Internal corner



### Schnitt 4a Außenecke

#### Section 4a External corner

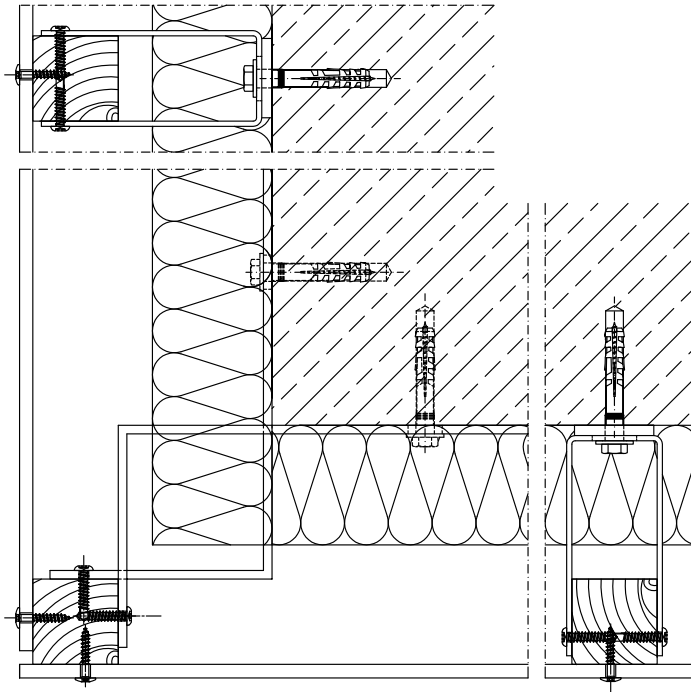


# Schnitte

## Sections

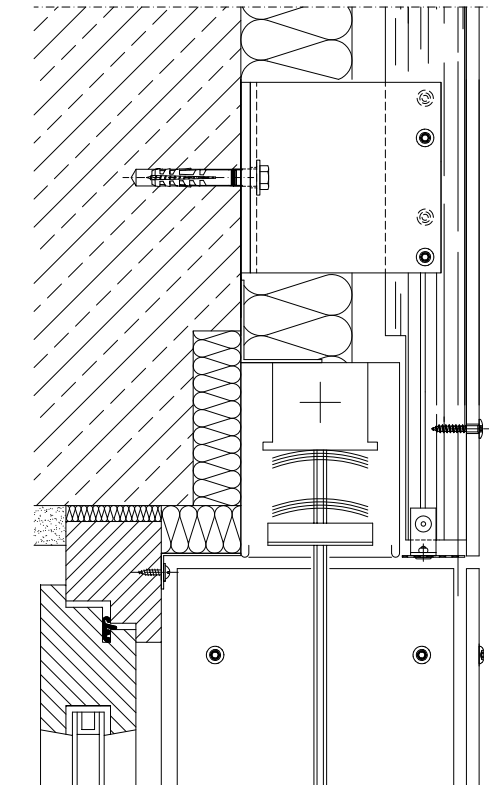
### Schnitt 4b Außenecke

#### Section 4b External corner



### Schnitt 5 Jalousiekasten

#### Section 5 Roller-blind box

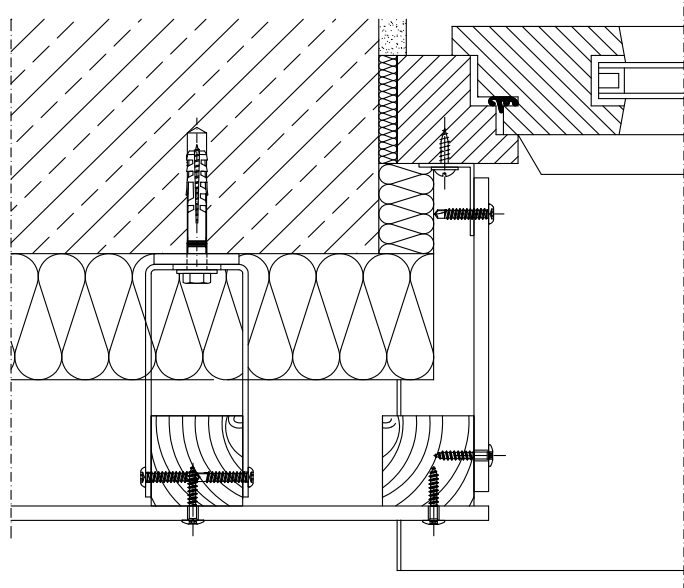


# Schnitte

## Sections

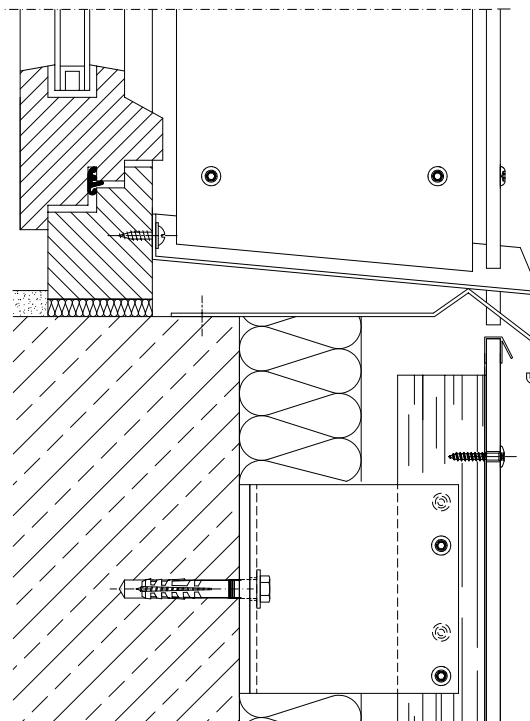
### Schnitt 6 Fensterleibung

#### Section 6 Window embrasure



### Schnitt 7 Fensterbank

#### Section 7 Window sill



Angrenzende Bauteile sind hier nur schematisch dargestellt. Die konkrete Detailausbildung ist unter Beachtung von Normen, Vorschriften und Richtlinien objektbezogen separat zu planen.

Adjacent components are shown here only schematically. The concrete details are to be planned separately in respect of the particular building involved. This must be done in accordance with the relevant standards, regulations and guidelines.

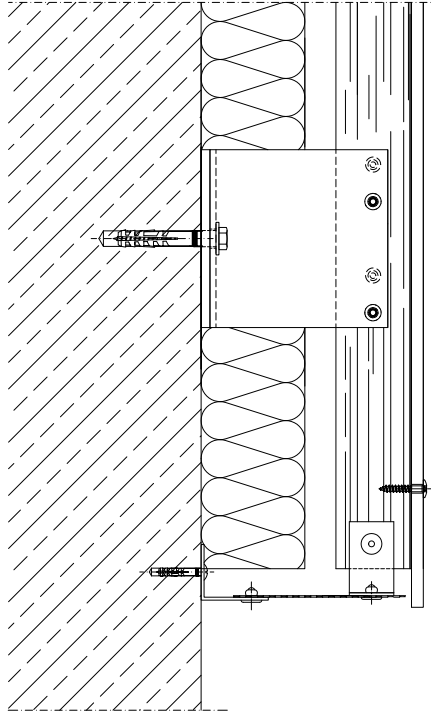


# Schnitte

## Sections

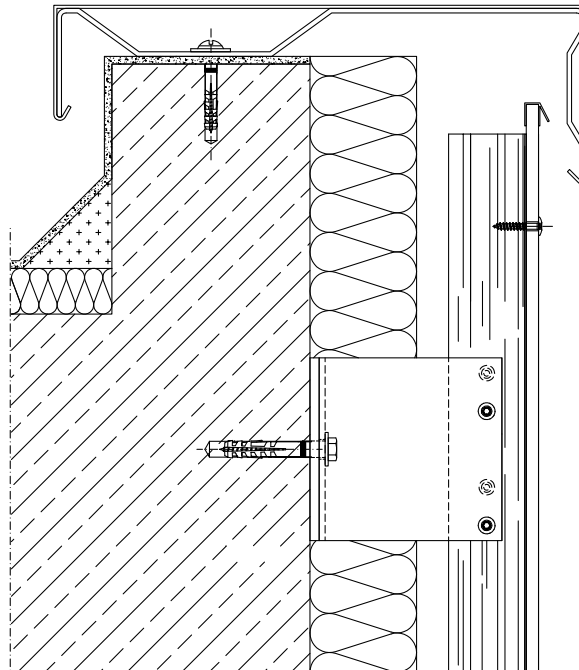
### Schnitt 8 Sockelabschluss

#### Section 8 Lower edge



### Schnitt 9 Attikaabschluss

#### Section 9 Attic connection



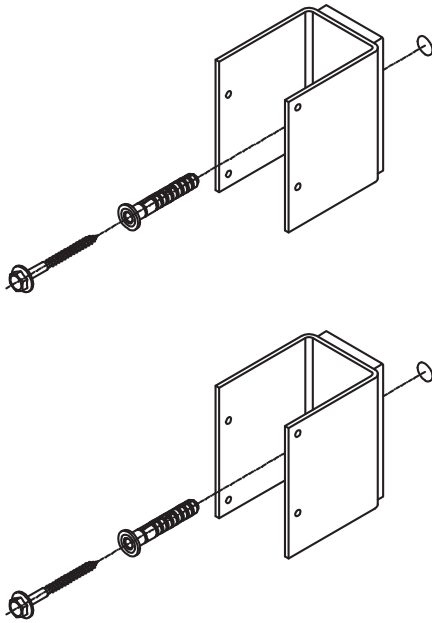
Angrenzende Bauteile sind hier nur schematisch dargestellt. Die konkrete Detailausbildung ist unter Beachtung von Normen, Vorschriften und Richtlinien objektbezogen separat zu planen.

Adjacent components are shown here only schematically. The concrete details are to be planned separately in respect of the particular building involved. This must be done in accordance with the relevant standards, regulations and guidelines.

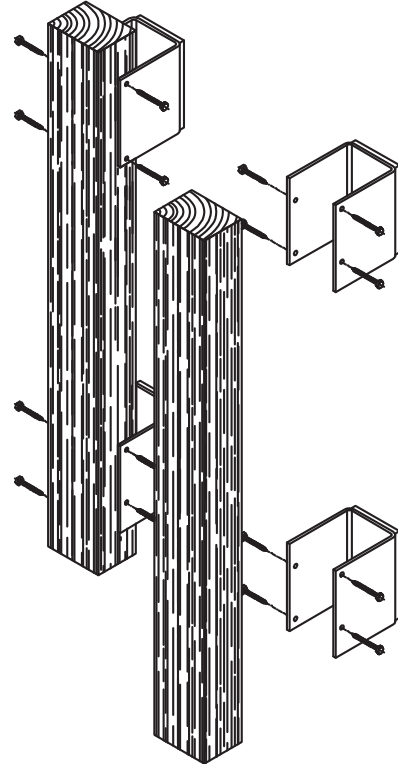
# Montagefolge

## Mounting sequence

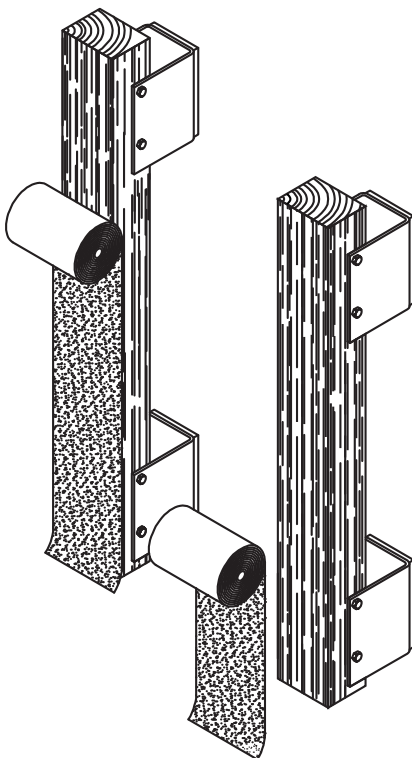
1



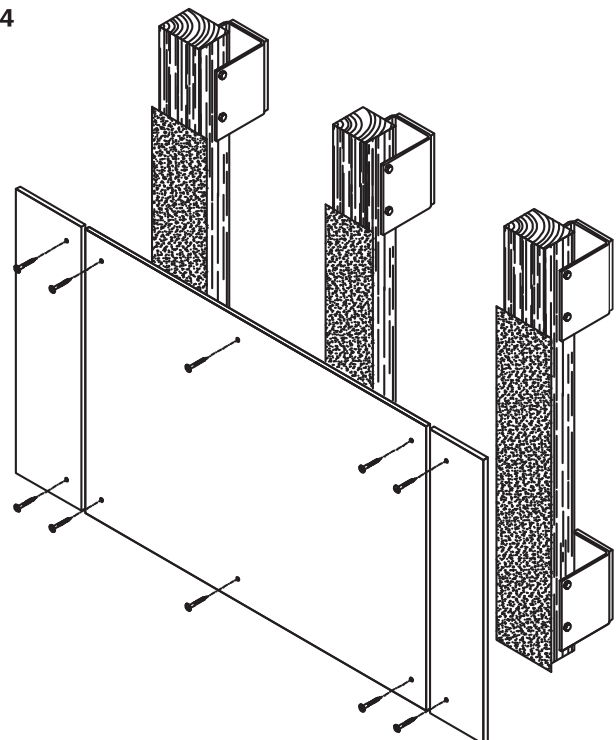
2



3

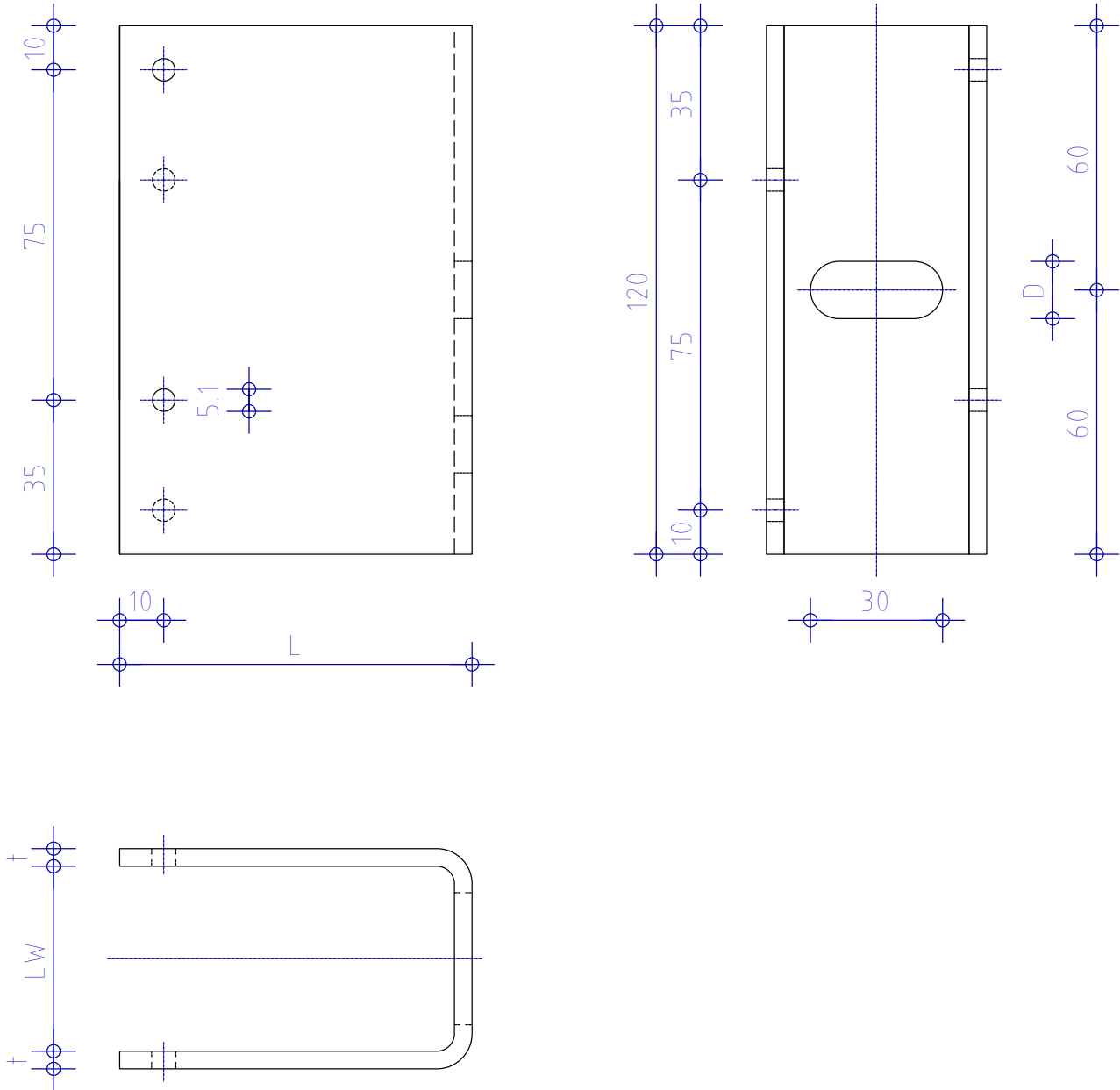


4



# U-Halter Typ H1, Aluminium gekantet

## U-Bracket type H1, Aluminium bended



**L = 80 / 100 / 120 / 140 / 160 / 180 / 200 / 220 / 240 / 260 / 280 / 300 / 320 mm**  
(Weitere Abmessungen auf Anfrage / on demand)

**LW = 40 / 50 / 60 / 80 / 100 mm (Standard / standard)**

**Abwicklung / True length =  $2 \times L + LW$**

**t = 3 / 4 mm**

**D = 11 / 15 mm (Standard / standard)**

**D = 13 / 9 mm (auf Anfrage / on demand)**

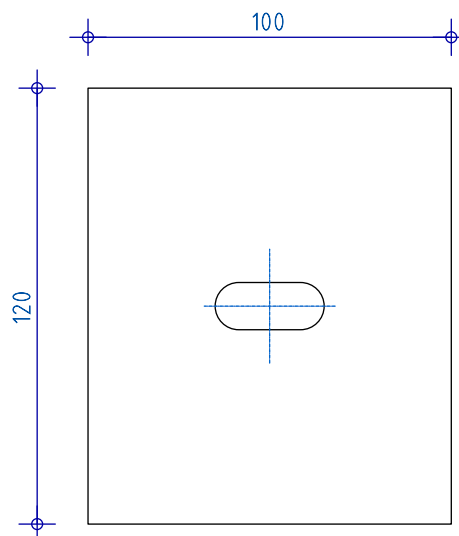
# Zubehörteile

## Accessories

### Thermostop (selbstklebend)

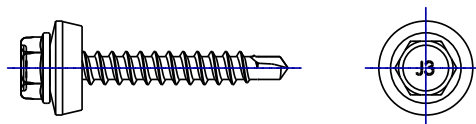
Thermostop (self-adhesive)

Art.-Nr. 100120



### Bohrschraube JT3-2-4,9x35-E14

Drilling screw JT3-2-4,9x35-E14



**Weitere Verbindungsmittel auf Anfrage**

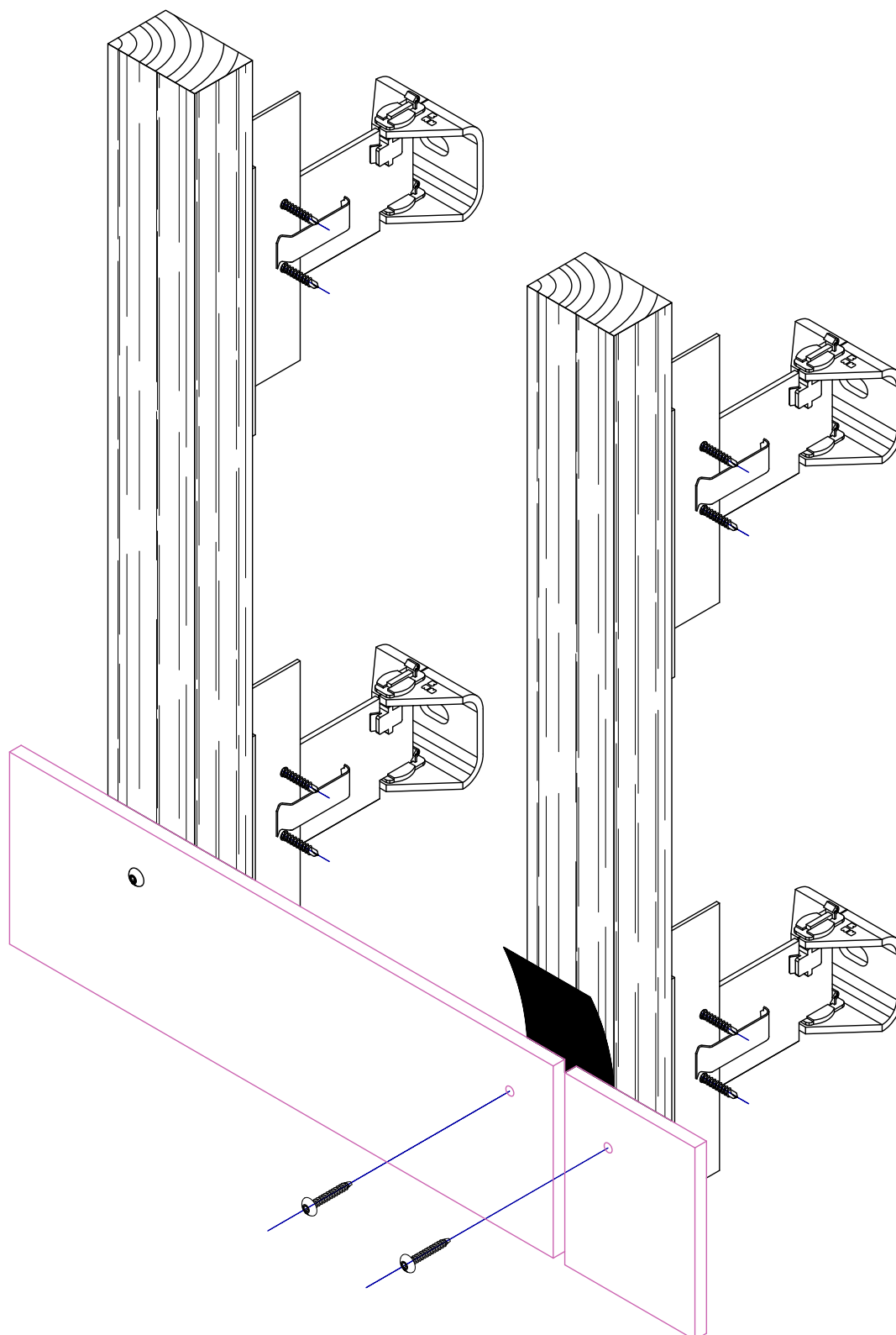
Further connecting device on demand

## Konstruktionsbeispiel

### Construction example

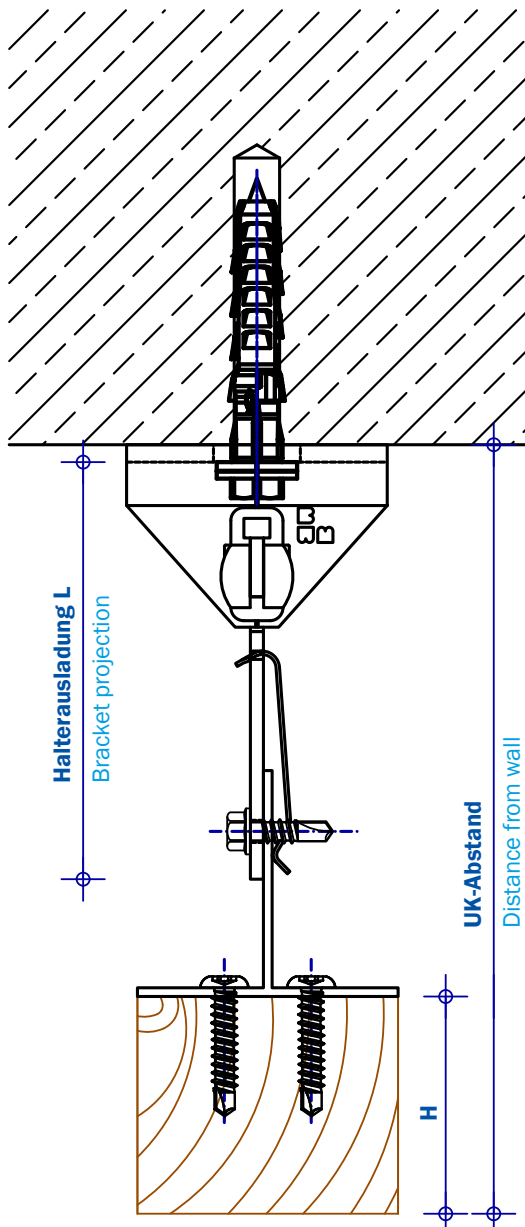
**Ebene Fassadentafeln, sichtbar befestigt**

Plane facade panels, visible fixing



# Wandabstände

## Distance from the wall



Halterausladung L (mm) Bracket projection L (mm)		UK-Abstand (mm) Distance from the wall (mm)	
100	AL	102 + H + T 132 + H + T	bis / up to
120	AL/E	122 + H + T 152 + H + T	bis / up to
140	AL/E	142 + H + T 172 + H + T	bis / up to
160	AL/E	162 + H + T 192 + H + T	bis / up to
180	AL/E	182 + H + T 212 + H + T	bis / up to
200	AL/E	202 + H + T 232 + H + T	bis / up to
220*	AL/E	222 + H + T 252 + H + T	bis / up to
240*	AL/E	242 + H + T 272 + H + T	bis / up to
260*	AL/E	262 + H + T 292 + H + T	bis / up to
280*	AL/E	282 + H + T 312 + H + T	bis / up to
300*	AL/E	302 + H + T 332 + H + T	bis / up to
320*	AL/E	322 + H + T 352 + H + T	bis / up to

**ZeLa-Schwert in Aluminium (AL)**  
**ZeLa-Schwert in Edelstahl (E)**  
 ZeLa-strut made of aluminium (AL)  
 ZeLa-strut made of stainless steel (E)

**\*Mit Verprägungsrillen**  
 \*With stamping grooves

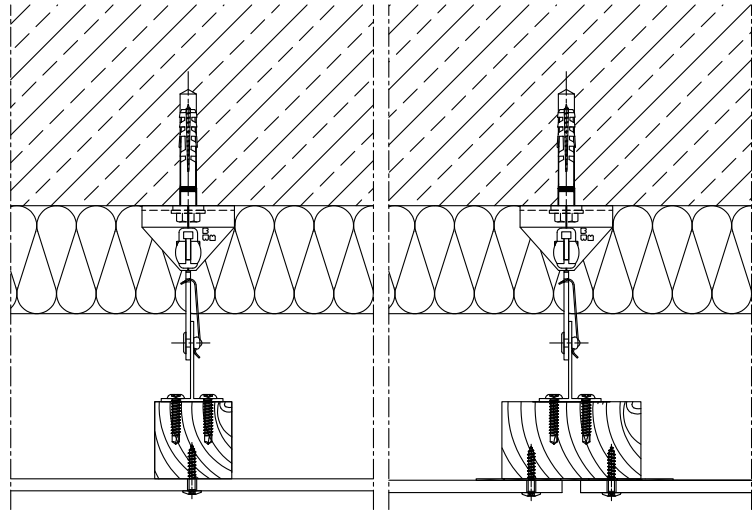
**Optional - BWM-Thermostop, T = 6 mm**  
 Optional - BWM-Thermal separating layer, T = 6 mm

# Schnitte

## Sections

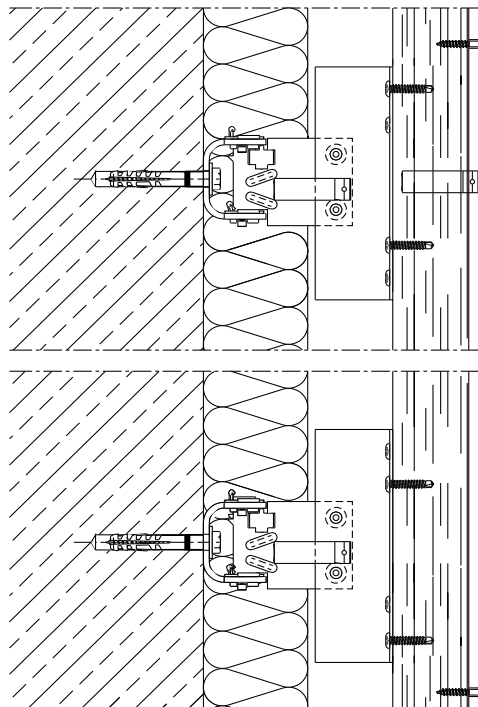
### Schnitt 1 Horizontalschnitt

#### Section 1 Horizontal section



### Schnitt 2 Vertikalschnitt

#### Section 2 Vertical section



Angrenzende Bauteile sind hier nur schematisch dargestellt. Die konkrete Detailausbildung ist unter Beachtung von Normen, Vorschriften und Richtlinien objektbezogen separat zu planen.

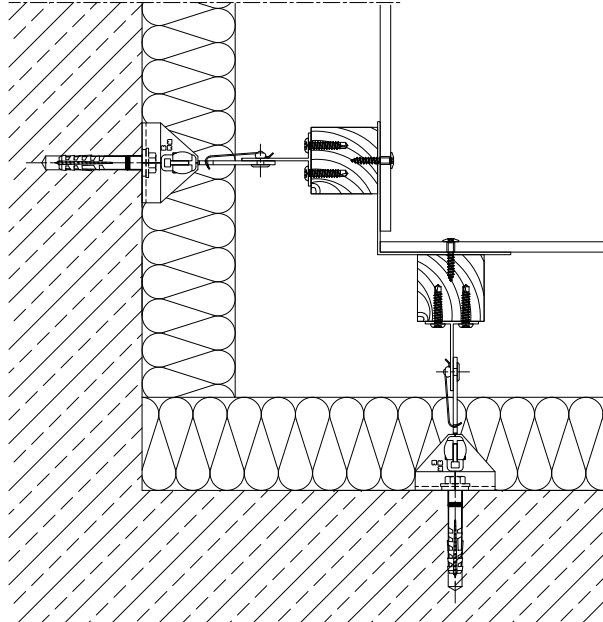
Adjacent components are shown here only schematically. The concrete details are to be planned separately in respect of the particular building involved. This must be done in accordance with the relevant standards, regulations and guidelines.

# Schnitte

## Sections

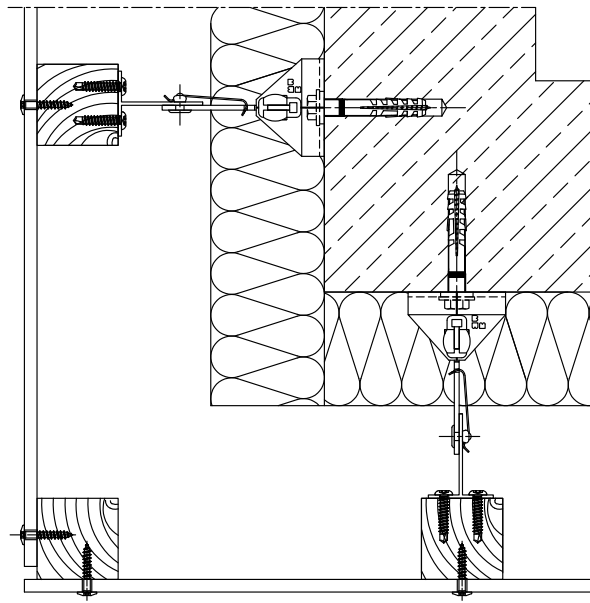
### Schnitt 3 Innenecke

#### Section 3 Internal corner



### Schnitt 4a Außenecke

#### Section 4a External corner



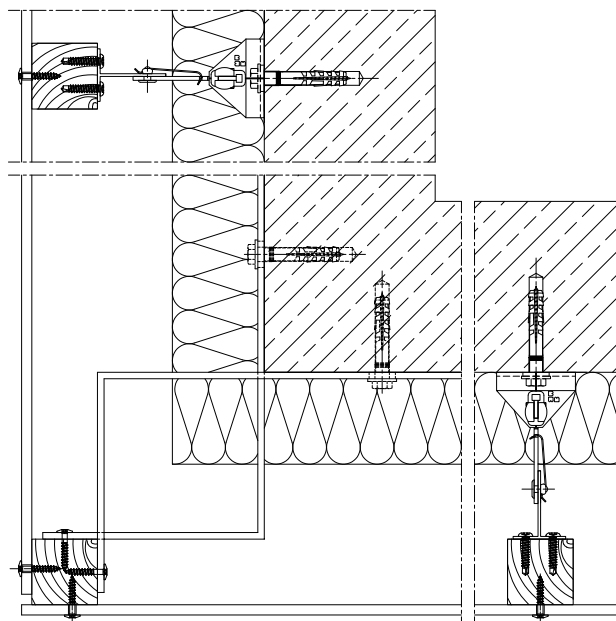
Angrenzende Bauteile sind hier nur schematisch dargestellt. Die konkrete Detailausbildung ist unter Beachtung von Normen, Vorschriften und Richtlinien objektbezogen separat zu planen.

Adjacent components are shown here only schematically. The concrete details are to be planned separately in respect of the particular building involved. This must be done in accordance with the relevant standards, regulations and guidelines.

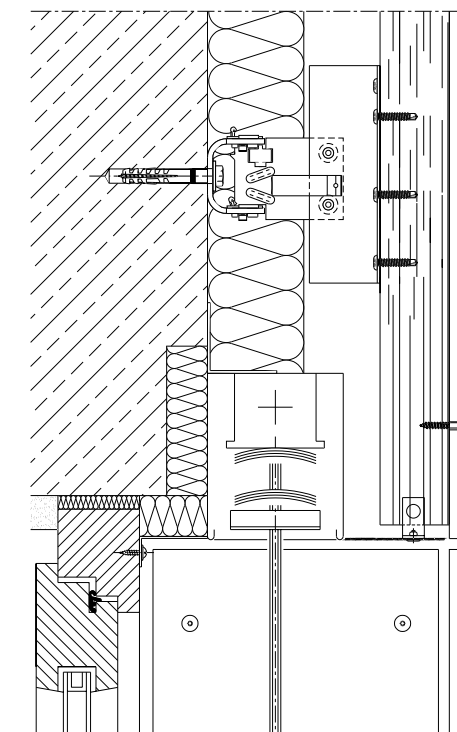


## Schnitte Sections

### Schnitt 4b Außenecke Section 4b External corner



### Schnitt 5 Jalousiekasten Section 5 Roller-blind box



Angrenzende Bauteile sind hier nur schematisch dargestellt. Die konkrete Detailausbildung ist unter Beachtung von Normen, Vorschriften und Richtlinien objektbezogen separat zu planen.

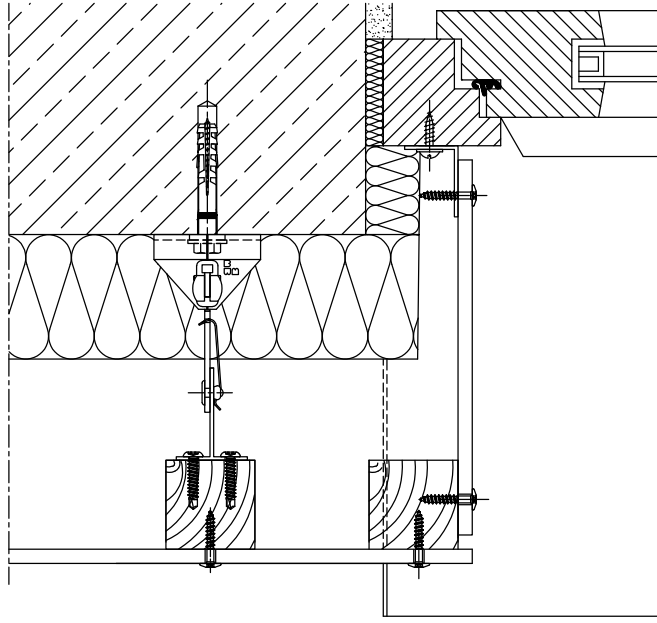
Adjacent components are shown here only schematically. The concrete details are to be planned separately in respect of the particular building involved. This must be done in accordance with the relevant standards, regulations and guidelines.

# Schnitte

## Sections

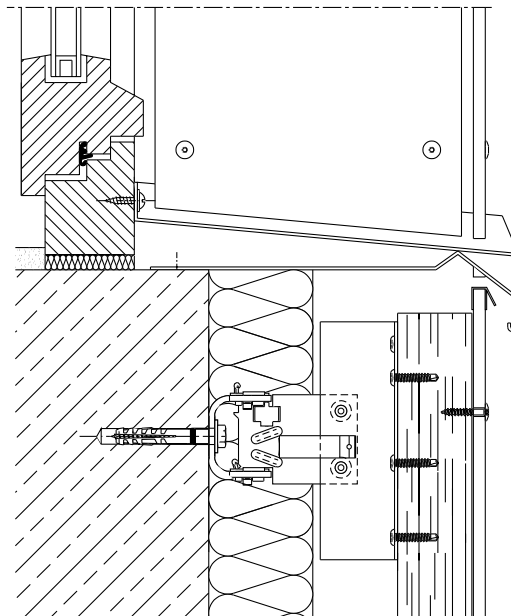
### Schnitt 6 Fensterleibung

#### Section 6 Window embrasure



### Schnitt 7 Fensterbank

#### Section 7 Window sill



Angrenzende Bauteile sind hier nur schematisch dargestellt. Die konkrete Detailausbildung ist unter Beachtung von Normen, Vorschriften und Richtlinien objektbezogen separat zu planen.

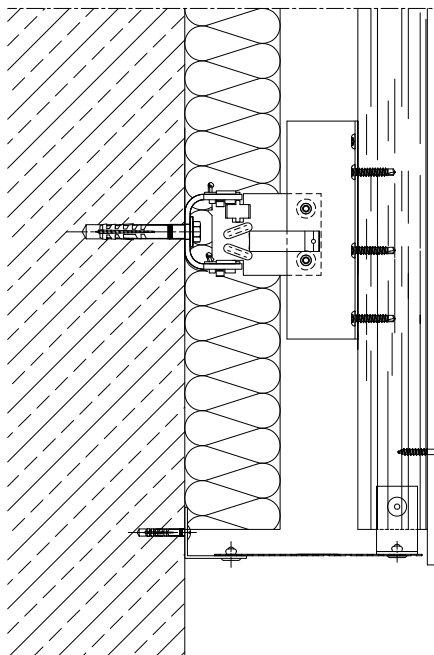
Adjacent components are shown here only schematically. The concrete details are to be planned separately in respect of the particular building involved. This must be done in accordance with the relevant standards, regulations and guidelines.

# Schnitte

## Sections

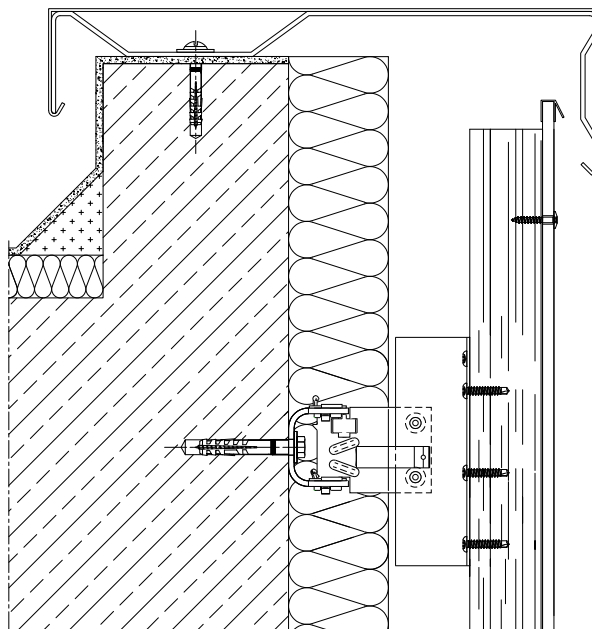
### Schnitt 8 Sockelabschluss

#### Section 8 Lower edge



### Schnitt 9 Attikaabschluss

#### Section 9 Attic connection

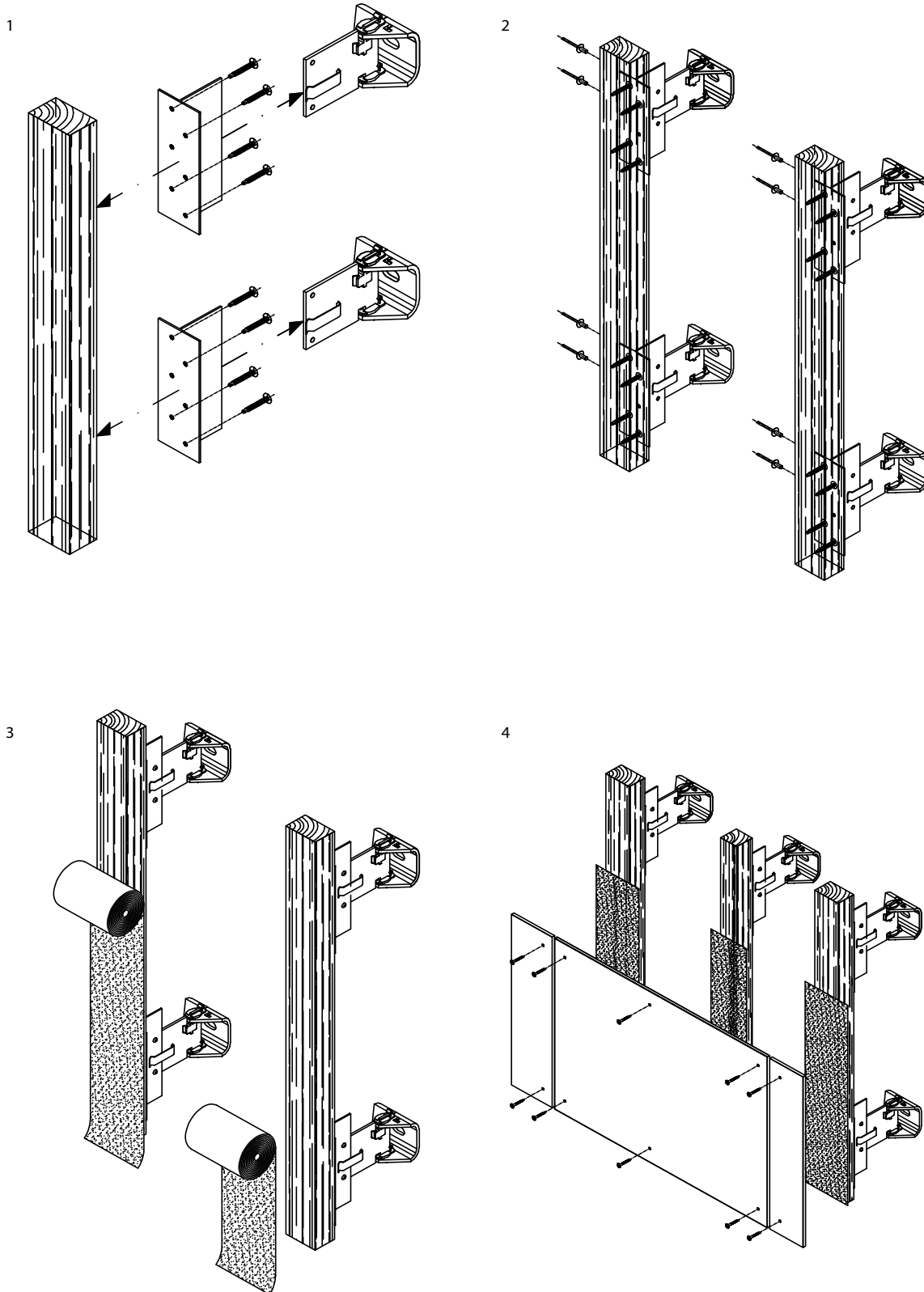


Angrenzende Bauteile sind hier nur schematisch dargestellt. Die konkrete Detailausbildung ist unter Beachtung von Normen, Vorschriften und Richtlinien objektbezogen separat zu planen.

Adjacent components are shown here only schematically. The concrete details are to be planned separately in respect of the particular building involved. This must be done in accordance with the relevant standards, regulations and guidelines.

# Montagefolge Holzhalter

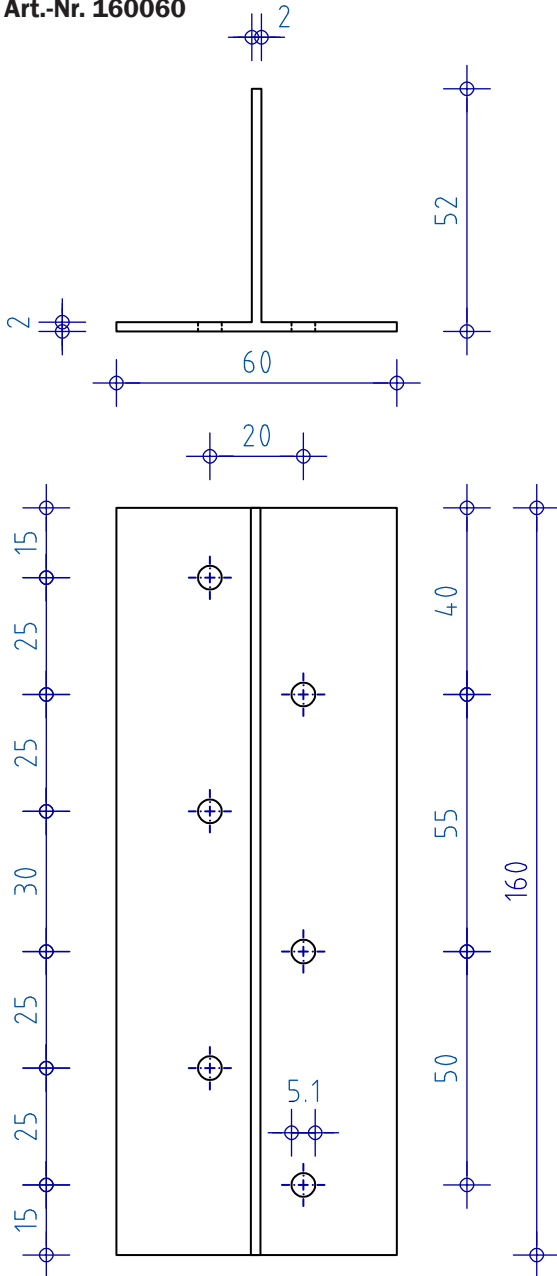
## Mounting sequence wood holder



# Holzhalter

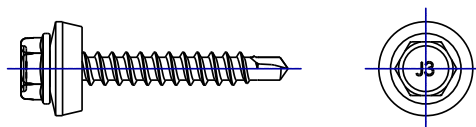
## Wood holder

**Holzhalter Typ T2**  
**Wood holder type T2**  
Art.-Nr. 160060



**Andere Lochungen auf Anfrage**  
**Other perforations on demand**

**Bohrschraube JT3-2-4,9x35-E14**  
**Drilling screw JT3-2-4,9x35-E14**

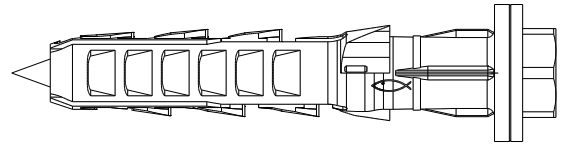


## Zubehörteile

### Accessories

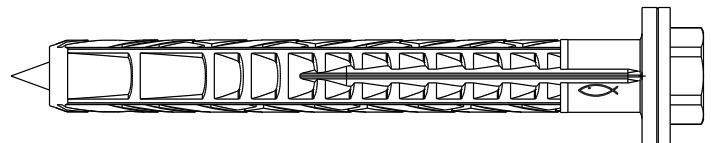
#### **fischer Langschaftdübel SXR 10 x L FUS**

fischer frame fixing SXR 10 x L FUS



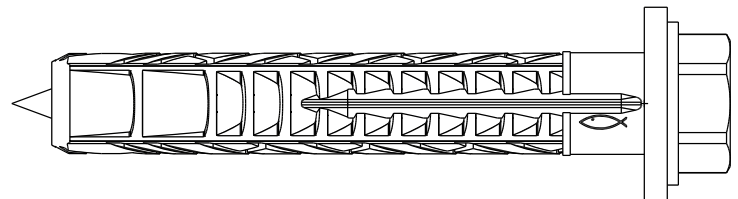
#### **fischer Langschaftdübel SXRL 10 x L FUS**

fischer frame fixing SXRL 10 x L FUS



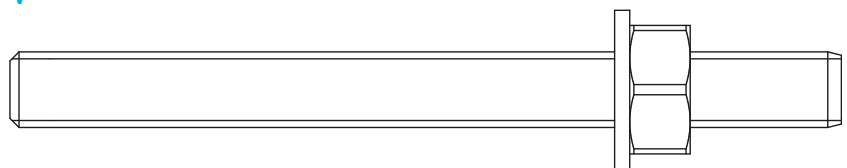
#### **fischer Langschaftdübel SXRL 14 x L FUS**

fischer frame fixing SXRL 14 x L FUS



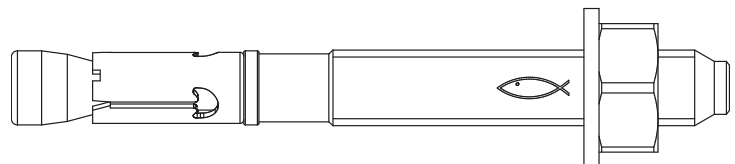
#### **fischer Injektionssysteme FIS V**

fischer injection systems FIS V



#### **fischer Bolzenanker FAZ II / R**

fischer bolt anchors FAZ II / R



**Weitere Verankerungsmittel (auch Verankerung in Stahl/Holz/etc.): auf Anfrage**  
Further anchoring elements (also anchoring in steel/wood/etc.): on demand