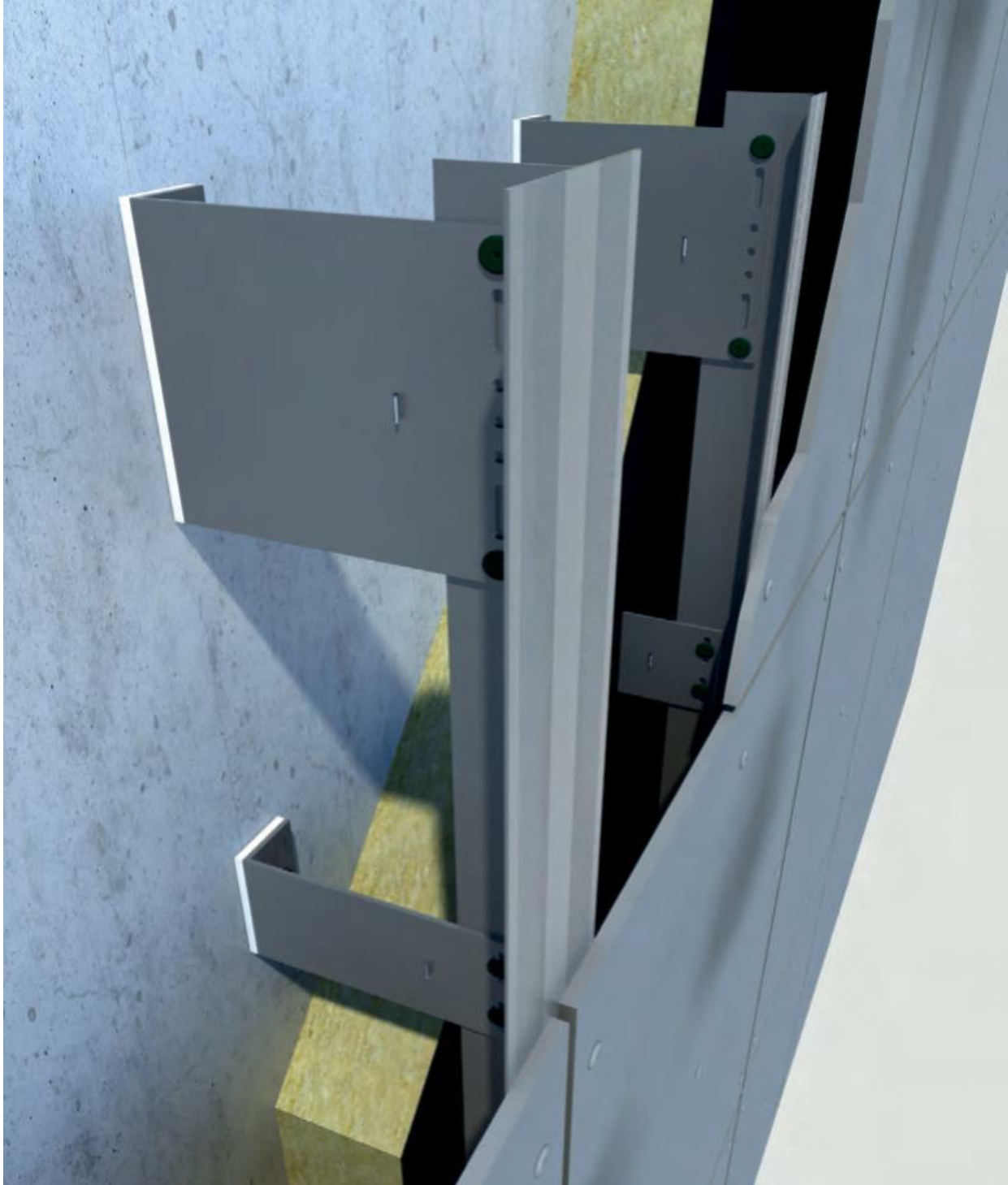


Product Data Sheet – ATK 100 Minor sub-structure system – stainless steel

Vertical support structure e.g. for visible fixing of plane facade panels
or as the base construction for diverse built-up systems



BWM FASSADENSYSTEME GmbH Ernst-Mey-Straße 1 D-70771 Leinfelden-Echterdingen	Rainscreen façade sub-structure system according to DIN 18516-1 consisting of:	
Products	Versions	Material
BWM L-bracket stainless steel „WAWI-E“ bended finish	Bracket height: 80;150;250;300 mm Bracket length: 40 - 320 mm further bracket lengths available on request	stainless steel 1.4401/1.4404/ 1.4571/1.4162 Internal separation layer
Extension (optional)	corresponding bracket heights	EN AW 6063 T66
Vertical support sections ATK 100 „Minor“ natural finish or anodized	T 120/52/2; T 110/52/2; T 100/52/2; T 60/52/2; T 40/52/2; L 42/50/2; T 120/52/2,5 T 40/52/2,5 tulip section; further sections available on request	EN AW 6063 T66 anodized C35
Connecting device	e.g. self-drilling screws SDA 5/3,5-8-H13-S4-5,5x22 JT4-3H/5-5,5x19 JT9-3H/5-5,5x19	A4 stainless steel A2 stainless steel A4 stainless steel
Anchoring elements	e.g. Frame fixing SXR/ SXRL e.g. FIS V injections system e.g. bolt anchor FAZ II R e.g. self-drilling screws	Plastic wall plug with zinc-coated or stainless steel screw with A4-70 stainless steel anchor rod made + accessories A4 stainless steel (R) A2 or A4 stainless steel
BWM-Thermostop (optional) self-adhesive	40/80; 40/150; 40/250; 40/300 d = 6 mm	PVC hard foam

Sections:

EN AW 6063 T66 tensile strength: $f(u) = 245 \text{ N/mm}^2$ 0.2% elastic limit: $f(o) = 200 \text{ N/mm}^2$

Wall bracket:

stainless steel 1.4401 tensile strength: $R(m) \geq 530 \text{ N/mm}^2$ 0.2% elastic limit: $R(p0,2) \geq 240 \text{ N/mm}^2$
stainless steel 1.4404 tensile strength: $R(m) \geq 530 \text{ N/mm}^2$ 0.2% elastic limit: $R(p0,2) \geq 240 \text{ N/mm}^2$