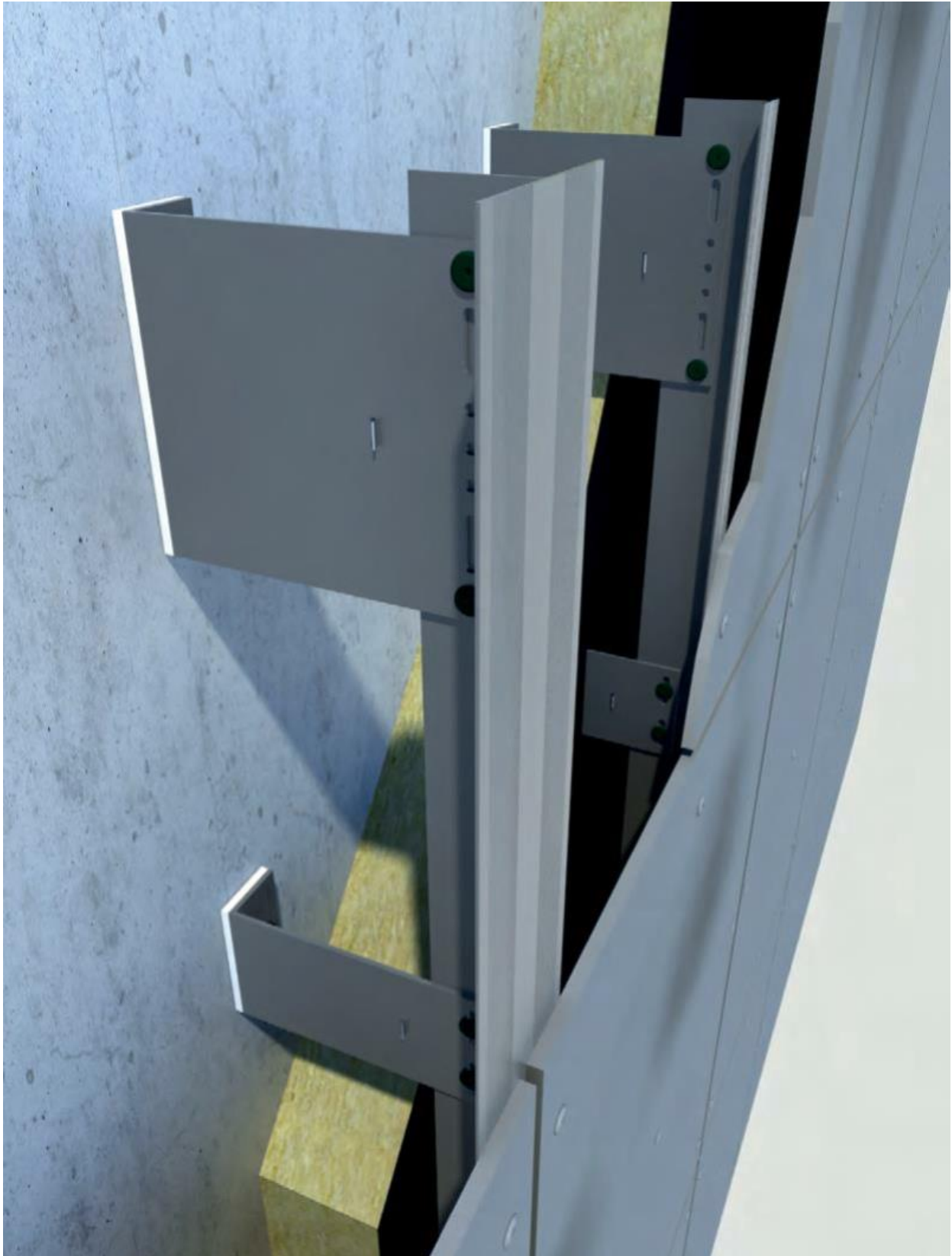


**Product Data Sheet – ATK 100 Minor Sub-Structure System**

Vertical supporting construction e.g. for visible fixing of plane facade panels  
or as the base construction for diverse built-up systems



<b>BWM FASSADENSYSTEME GmbH</b> Ernst-Mey-Straße 1 D-70771 Leinfelden-Echterdingen	<b>Ventilated Rainscreen Facade sub-structure system according to DIN 18516-1 consisting of:</b>	
<b>Products</b>	<b>Versions</b>	<b>Material</b>
BWM „WAWI“ L-brackets - Extruded finish	Bracket heights: 80;150;250;300 mm Bracket width: 40 - 320 mm	EN AW 6063 T66
- Bended finish	Bracket width: > 320 mm	EN AW 5754 H24/H34
Extension (optional)	corresponding bracket height	EN AW 6063 T66
Inox spline (optional)		stainless steel
Vertical support sections ATK 100 „Minor“ natural finish or anodized	T 120/52/2; T 110/52/2; T 100/52/2; T 60/52/2; T 40/52/2; L 42/50/2; T 120/52/2,5 T 40/52/2,5 tulip section; further sections available on request	EN AW 6063 T66  C35 anodized
Connection device	e.g. BWM special rivet SNA 5x12 K14  e.g. self-drilling screws SDA 5/3,5-8-H13-S4-5,5x22 JT4-3H/5-5,5x19 JT9-3H/5-5,5x19	Sleeve: EN AW 5754 Mandrel: 1.4541 stainless steel  A4 stainless steel A2 stainless steel A4 stainless steel
Anchoring elements	e.g. Frame fixing SXR/ SXR-L  e.g. FIS V injection system  e.g. bolt anchor  e.g. self-drilling screws	Plastic wall plug with zinc-coated screw or stainless steel screw  with A4-70 stainless steel anchor rod + accessoires  A4 stainless steel (R)  A2 or A4 stainless steel
BWM-Thermostop (optional) self-adhesive	40/80;40/150;40/250;40/300 d = 6 mm	PVC hard foam

Sections:

EN AW 6063 T66      tensile strength:  $f(u) = 245 \text{ N/mm}^2$       0.2% elastic limit:  $f(o) = 200 \text{ N/mm}^2$

Wall brackets:

EN AW 6063 T66      tensile strength:  $f(u) = 245 \text{ N/mm}^2$       0.2% elastic limit:  $f(o) = 200 \text{ N/mm}^2$

EN AW 5754 H24/H34      tensile strength:  $f(u) = 240 \text{ N/mm}^2$       0.2% elastic limit:  $f(o) = 160 \text{ N/mm}^2$