

Certificate

Certified Passive House component

for cool, temperate climate, valid until 31.12.2016

Passive House Institute
Dr. Wolfgang Feist
64283 Darmstadt
GERMANY

Category: **Facade anchor**
Manufacturer: **BWM Dübel- und Montagetechnik GmbH**
70771 Leinfelden- Echterdingen
Product name: **BWM - Thermokonsole**

The following criteria were used in awarding this certificate:

Efficiency Criterion

In two typical applications*, the construction fulfills the requirements of

$$\Delta U_{WB} \leq 0.010 \text{ W/(m}^2\text{K)}$$

Comfort Criterion

The inner surface must be warm enough to prevent mould as well as uncomfortable down-draught and radiation losses.

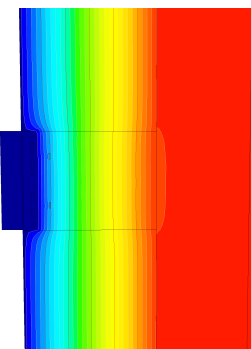
$$\theta_{i,min} \leq 17^\circ\text{C}$$

Thermal data of the certified component

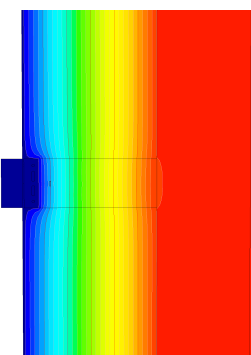
BWM Thermo-konsole	thermal bridge coefficient χ [W/K]	minimum inner surface temperature $\theta_{i,min}$ [°C]
Sliding point / fixed point H300	0.0026	19.45
Sliding point / fixed point H200	0.0017	19.46
Sliding point / fixed point H100	0.0009	19.47

* The criterion has been validated with two representative buildings: a row house and a school building.

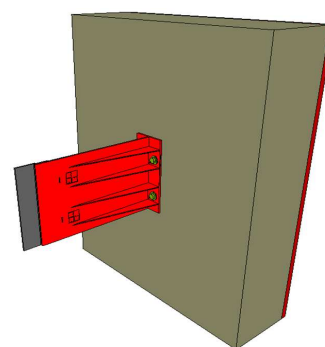
www.passivehouse.com



Isothermal map of the fixed point H200



Isothermal map of the sliding point H100



Representation of the fixed point H200



CERTIFIED COMPONENT

Passive House Institute