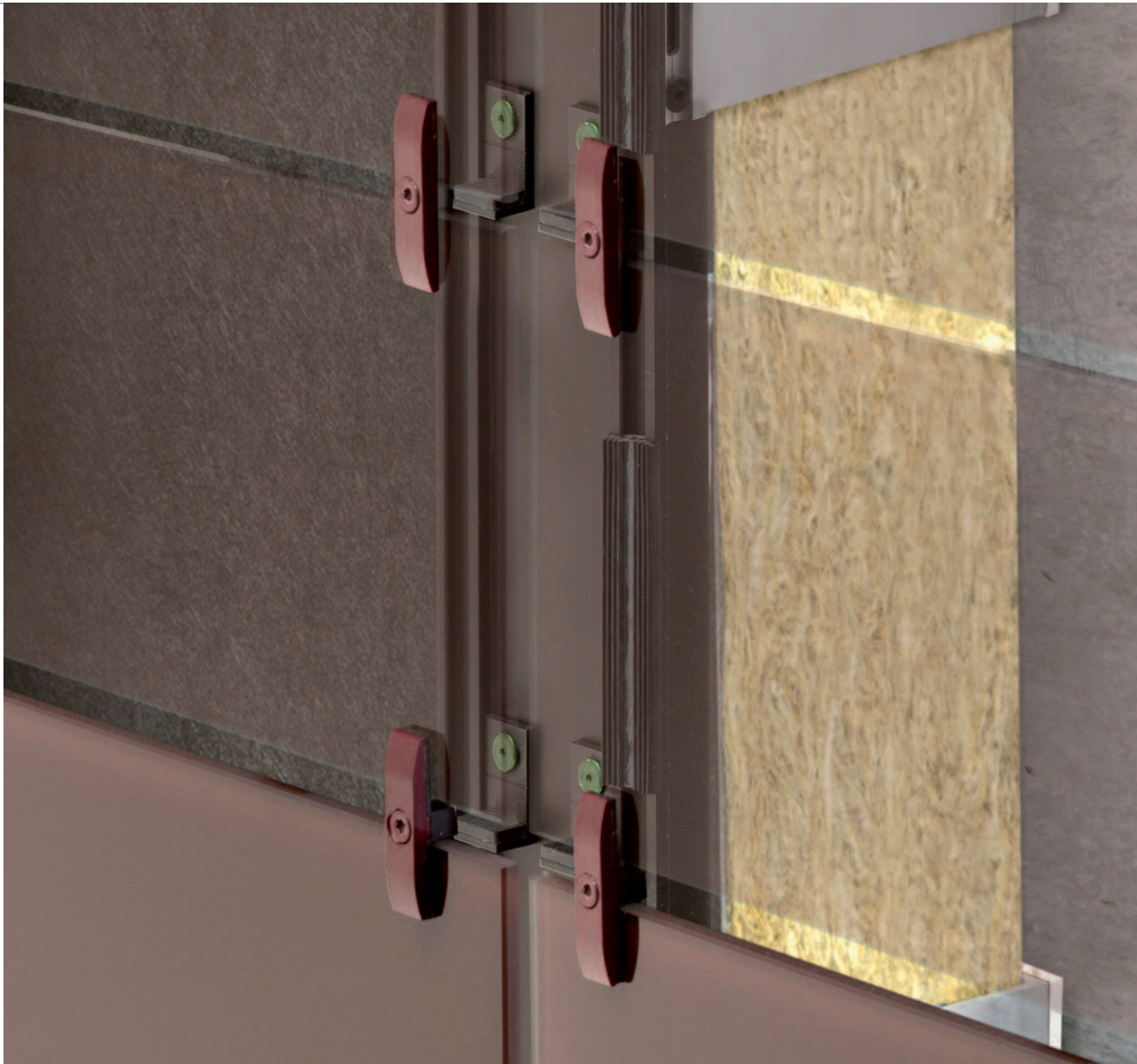


BWM Konstruktion ATK 102-GH

BWM Construction
ATK 102-GH



BWM – Ihr Partner für Fassadensysteme
BWM – Your partner for facade systems

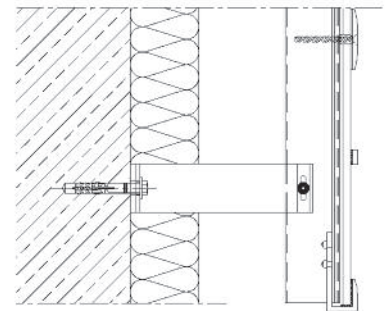
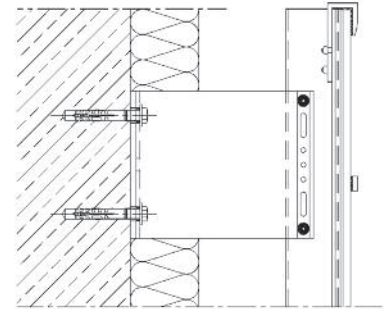
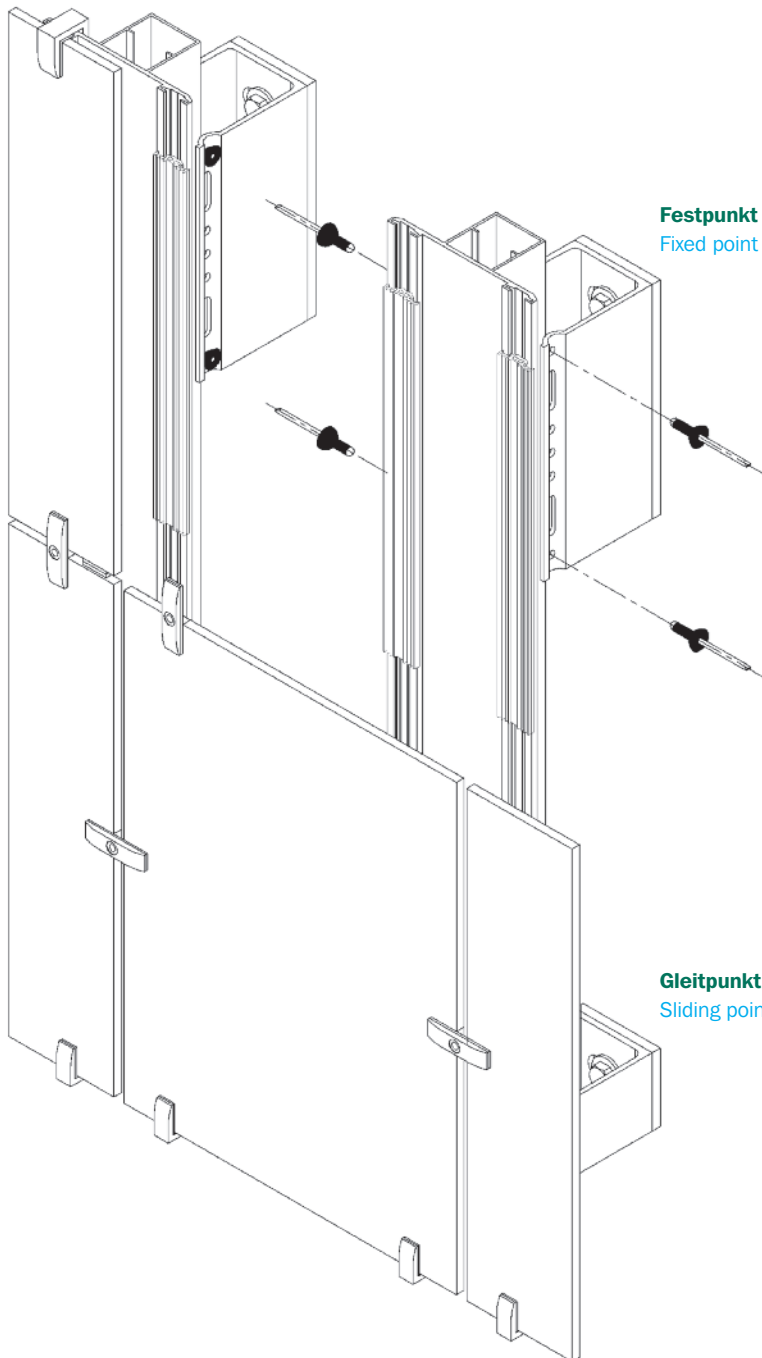
BWM ATK 102-GH

ESG-Verglasung und Photovoltaik-Glaselemente

Toughened safety glass and photovoltaic glass panels

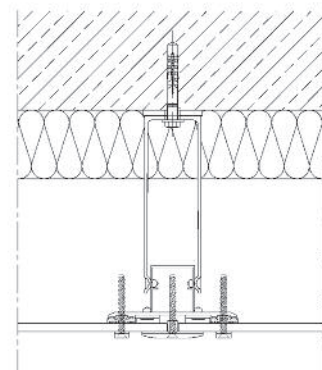
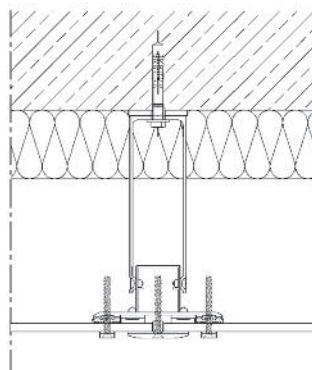
Vertikalschnitt

Vertical section



Horizontalschnitt

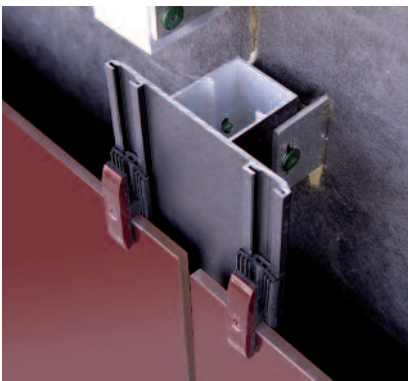
Horizontal section



Die Vorteile

Benefits

- anwendbar für ESG-Verglasung und Photovoltaik-Glaselemente mit Plattendicke 8 mm (weitere Dicken auf Anfrage)
- Berechnung der ESG-Verglasung nach DIN 18516 Teil 1 und Teil 4
- einfache Montage
- große Spannweiten der Tragprofile realisierbar
- kein Bauteil, sondern ein komplettes System
- Glaselemente einfach austauschbar
- Form der Glashalter auf Kundenwunsch gestaltbar
- Beschichtung oder Oberflächengestaltung individuell möglich



- applicable for toughened safety glass and photovoltaic glass panels, panel thickness 8 mm (other thicknesses on demand)
- structural calculation of toughened safety glass according to DIN 18516 part 1 and part 4
- easy installation
- large spans of the vertical profiles can be achieved
- no component, but a complete system
- easy replacement of glass panels
- shape of the clamps designable on customer's demand
- coating or surface design can be arranged individually

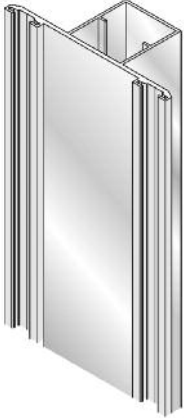


Systemteile

System components

Hauptprofil Glas

Main section glass



EPDM-Profil

EPDM-profile



Anfangs- und Abschlussklammer

Lower and upper clamp



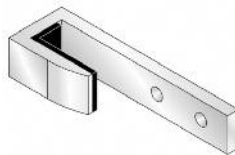
Glas-Halteplatte

Glass holder



Glashalteklammer seitlich

Glass holder sideways



Glasaufstandswinkel

Glass-bearing bracket



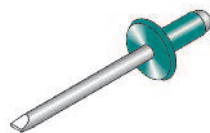
Schraube JZ3-S-6,3x35

Screw JZ3-S-6,3x35



BWM-Spezialniet SNA 5x12 K14

BWM-Special rivet SNA 5x12 K14



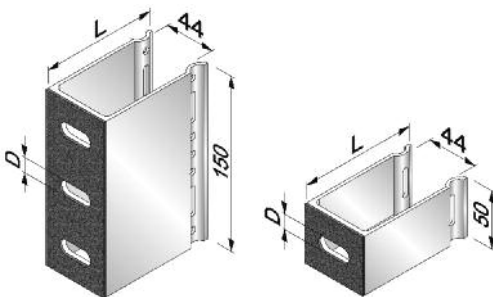
BWM-Spezialniet SNA 5x12

BWM-Special rivet SNA 5x12



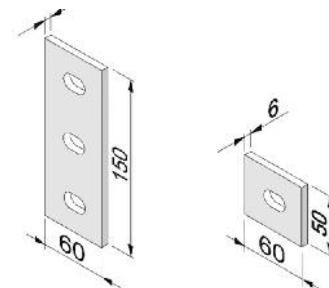
U-Halter Typ S

U-Brackets type S



Thermostop

Thermostop



Technische Änderungen vorbehalten.
Possibly subject to technical alterations.



BWM
Dübel +
Montagetechnik
GmbH

Ernst-Mey-Straße 1
D-70771 Leinfelden-Echterdingen
T +49 (0) 711 / 90 313-0
F +49 (0) 711 / 90 313-20
info@bwm.de · www.bwm.de