

ATK 106 SZ 20

Technische Informationen

ATK 106 SZ 20

Technical Information

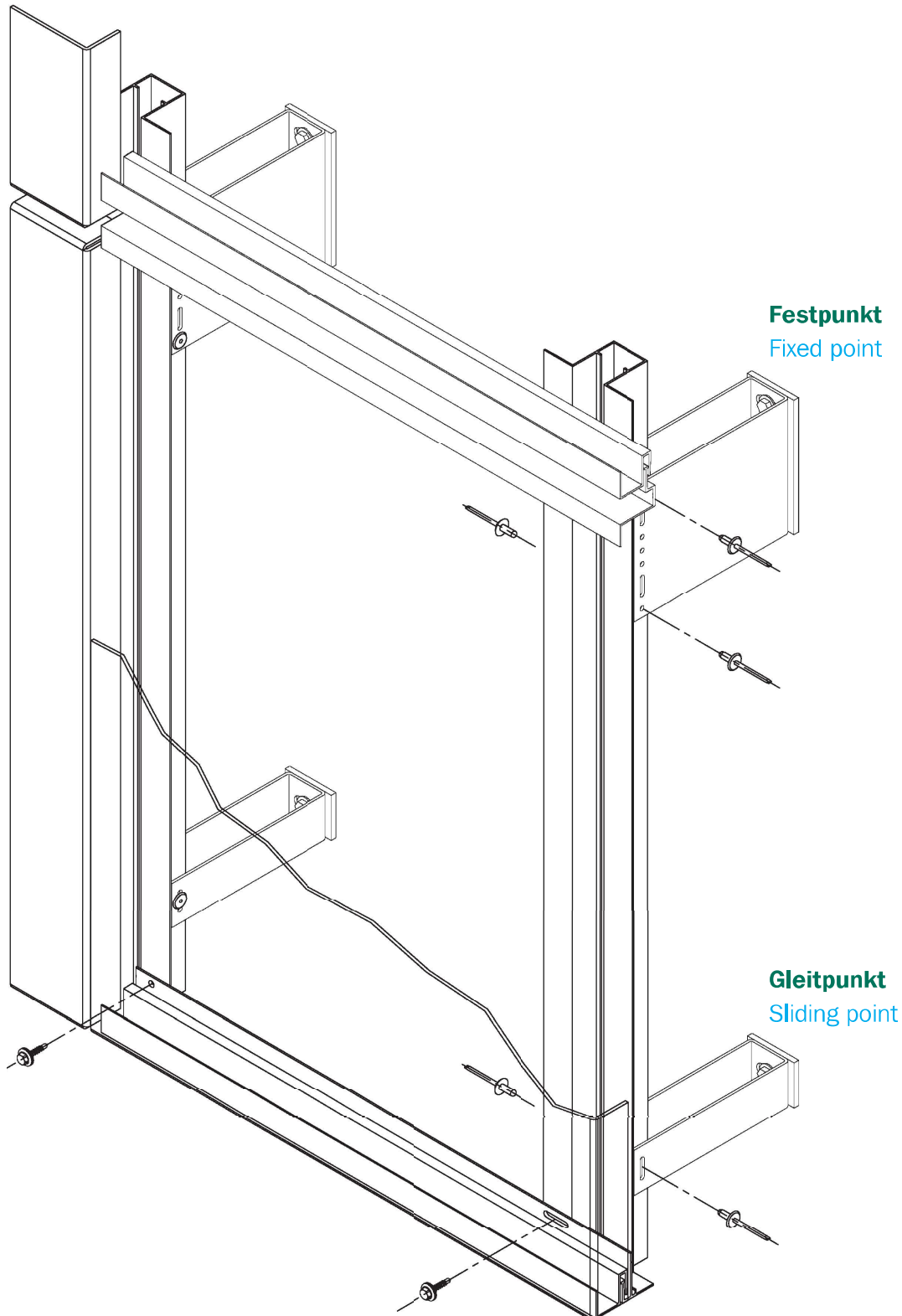


Konstruktionsbeispiel ATK 106 SZ 20

Construction example ATK 106 SZ 20

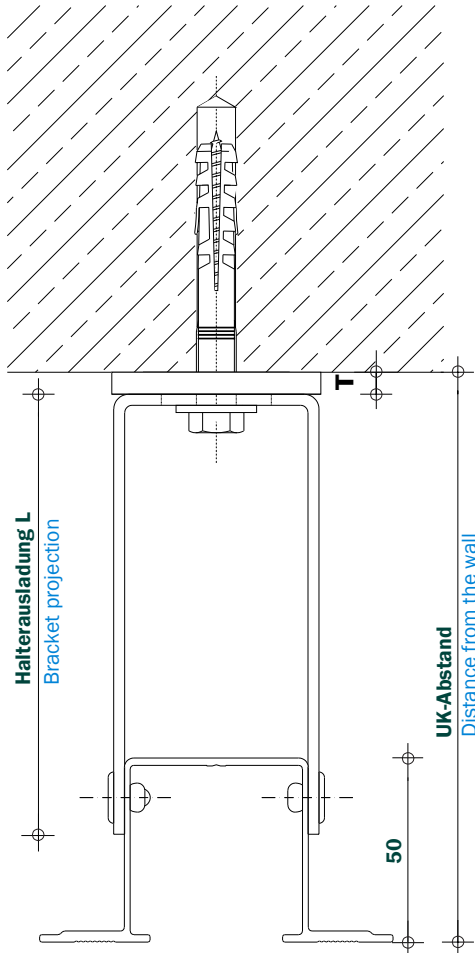
Aluminium- und Aluminiumverbundplatten

Aluminium and aluminium-composite panels



Wandabstände ATK 106 SZ 20

Distance from the wall ATK 106 SZ 20



Halteausladung L (mm) Bracket projection	UK-Abstand (mm) Distance from the wall
60	63 + T bis /up to 90 + T
80	83 + T bis /up to 110 + T
100	103 + T bis /up to 130 + T
120	123 + T bis /up to 150 + T
140	143 + T bis /up to 170 + T
160	163 + T bis /up to 190 + T
180	183 + T bis /up to 210 + T
200	203 + T bis /up to 230 + T
220	223 + T bis /up to 250 + T
240	243 + T bis /up to 270 + T
260	263 + T bis /up to 290 + T
280	283 + T bis /up to 310 + T
300	303 + T bis /up to 330 + T
320	323 + T bis /up to 350 + T

Sonderlängen und Sonderhalter auf Anfrage
Special lengths and special brackets on demand

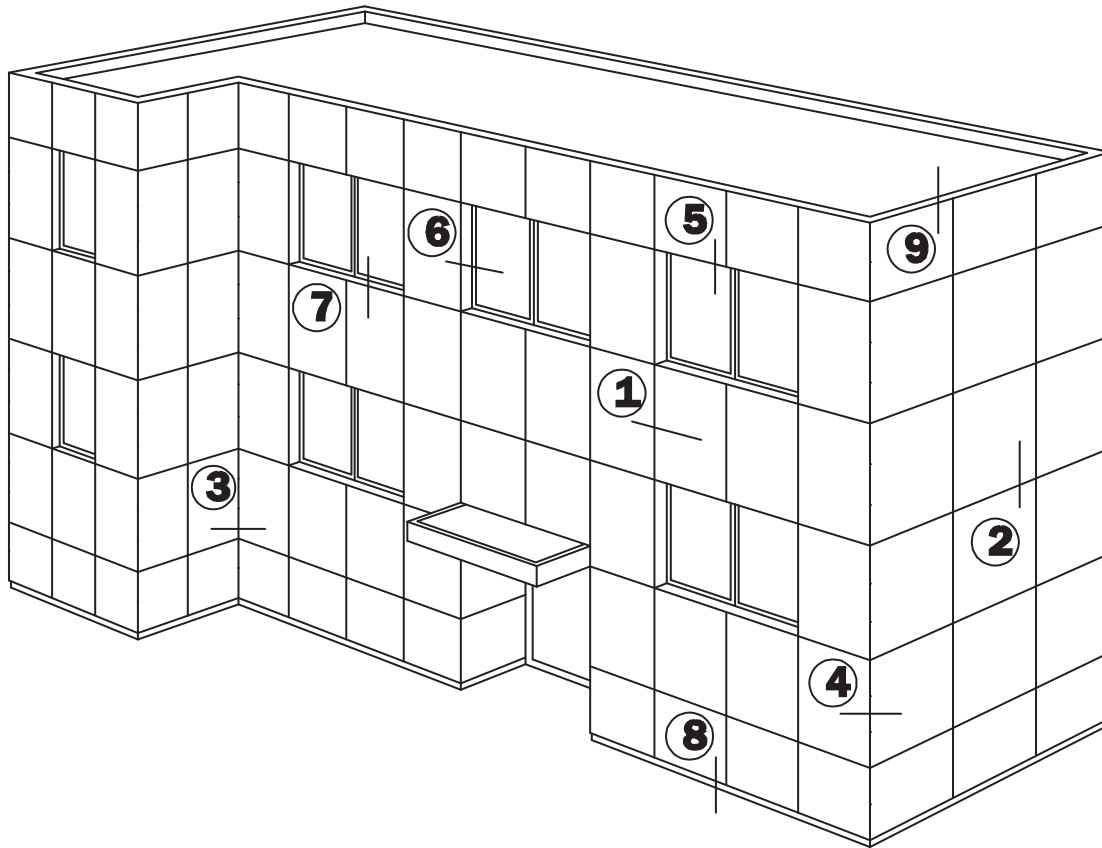
T = Dicke BWM-Thermostop, T = 6mm
T = Thickness of the thermal separating section, T = 6mm

Bei geringen Wandabständen können die Kopfabmessungen des Verankerungselements maßgebend sein
In case of low distances from wall the head sizes of the dowel plugs be relevant

Weitere vertikale Basiskonstruktionen
z.B. ATK 100 Minor, ATK 100 Zela, ATK 601 + T- bzw. Tulpenprofil
Other vertical basis substructures
e.g. ATK 100 Minor, ATK 100 ZeLa, ATK 601 + T- or tulip section

Schnittübersicht

Section overview



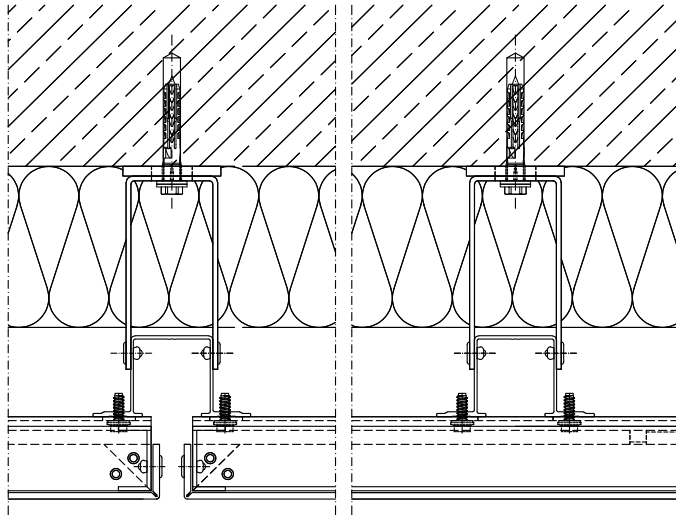
Schnitt 1 Section 1	Horizontalschnitt Horizontal section	Schnitt 6 Section 6	Fensterleibung Window embrasure
Schnitt 2 Section 2	Vertikalschnitt Vertical section	Schnitt 7 Section 7	Fensterbank Window sill
Schnitt 3 Section 3	Innenecke Internal corner	Schnitt 8 Section 8	Sockelabschluss Lower edge (bottom end)
Schnitt 4 Section 4	Außenecke External corner	Schnitt 9 Section 9	Attikaabschluss Attic connection (top end)
Schnitt 5 Section 5	Jalousiekasten Roller-blind box		

Schnitte ATK 106 SZ 20

Sections ATK 106 SZ 20

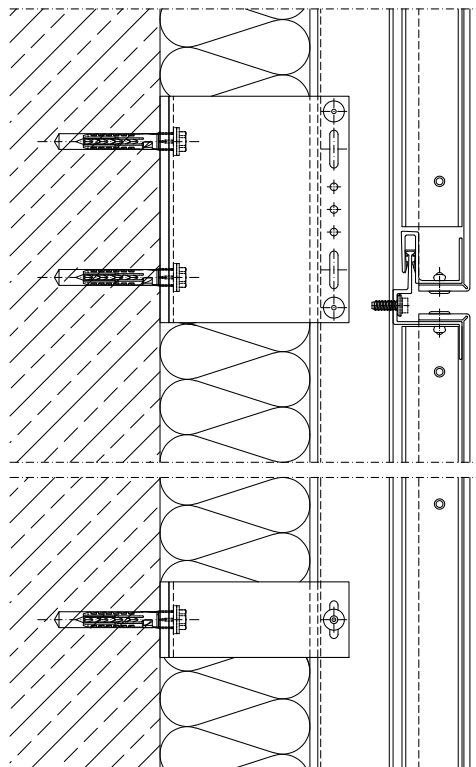
Schnitt 1 Horizontalschnitt

Section 1 Horizontal section



Schnitt 2 Vertikalschnitt

Section 2 Vertical section



Angrenzende Bauteile sind hier nur schematisch dargestellt. Die konkrete Detailausbildung ist unter Beachtung von Normen, Vorschriften und Richtlinien objektbezogen separat zu planen.

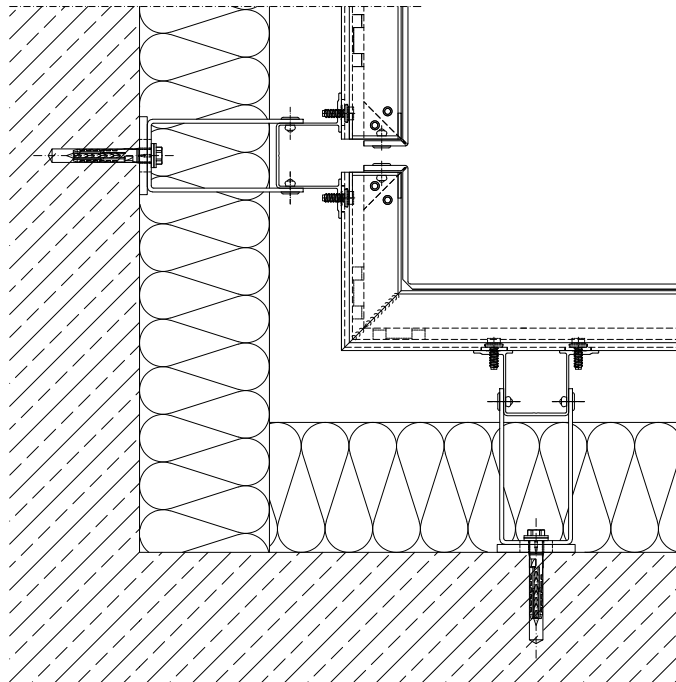
Adjacent components are shown here only schematically. The concrete details are to be planned separately in respect of the particular building involved. This must be done in accordance with the relevant standards, regulations and guidelines.

Schnitte ATK 106 SZ 20

Sections ATK 106 SZ 20

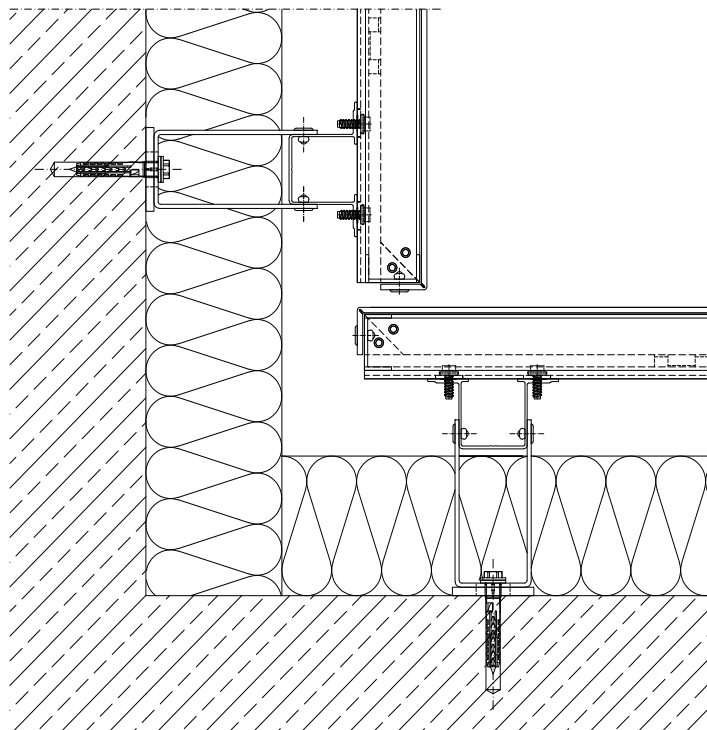
Schnitt 3a Innenecke

Section 3a Internal Corner



Schnitt 3b Innenecke

Section 3b Internal Corner



Angrenzende Bauteile sind hier nur schematisch dargestellt. Die konkrete Detaillausbildung ist unter Beachtung von Normen, Vorschriften und Richtlinien objektbezogen separat zu planen.

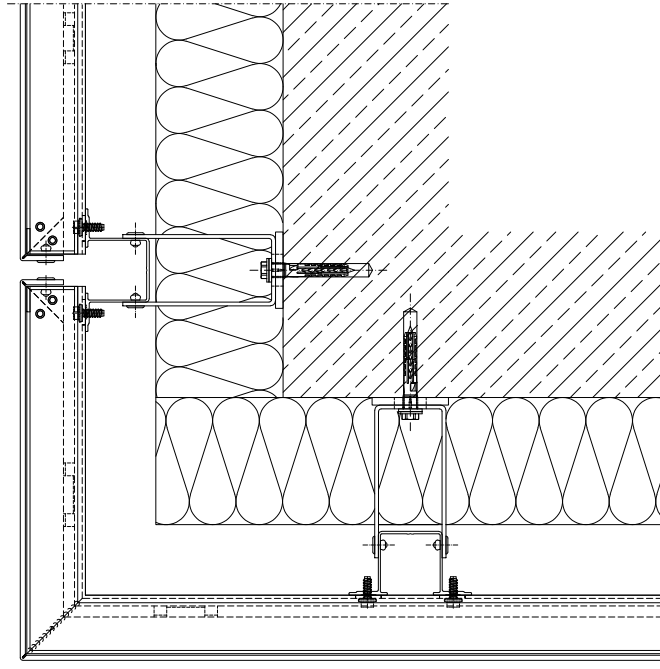
Adjacent components are shown here only schematically. The concrete details are to be planned separately in respect of the particular building involved. This must be done in accordance with the relevant standards, regulations and guidelines.

Schnitte ATK 106 SZ 20

Sections ATK 106 SZ 20

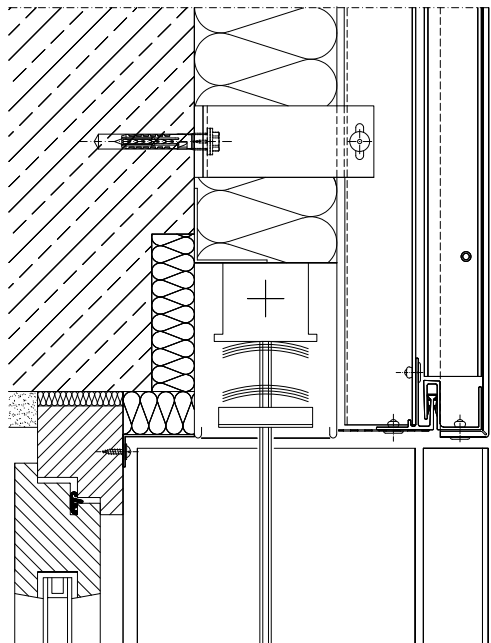
Schnitt 4 Außenecke

Section 4 External corner



Schnitt 5 Jalousiekasten

Section 5 Roller blind box



Angrenzende Bauteile sind hier nur schematisch dargestellt. Die konkrete Detailsausbildung ist unter Beachtung von Normen, Vorschriften und Richtlinien objektbezogen separat zu planen.

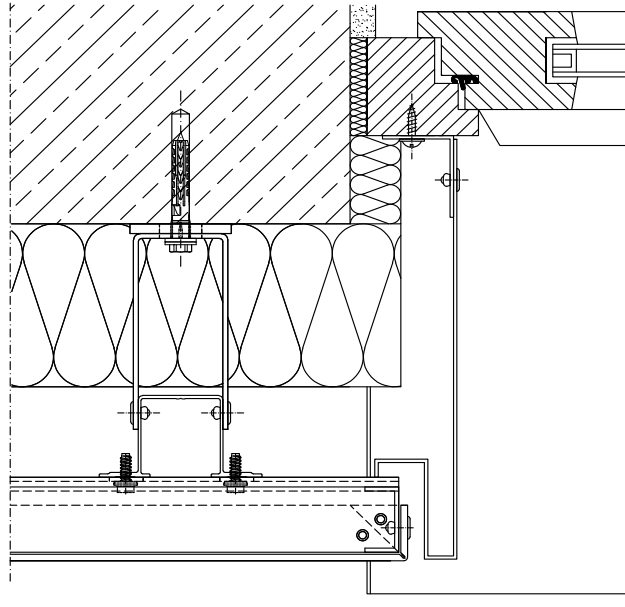
Adjacent components are shown here only schematically. The concrete details are to be planned separately in respect of the particular building involved. This must be done in accordance with the relevant standards, regulations and guidelines.

Schnitte ATK 106 SZ 20

Sections ATK 106 SZ 20

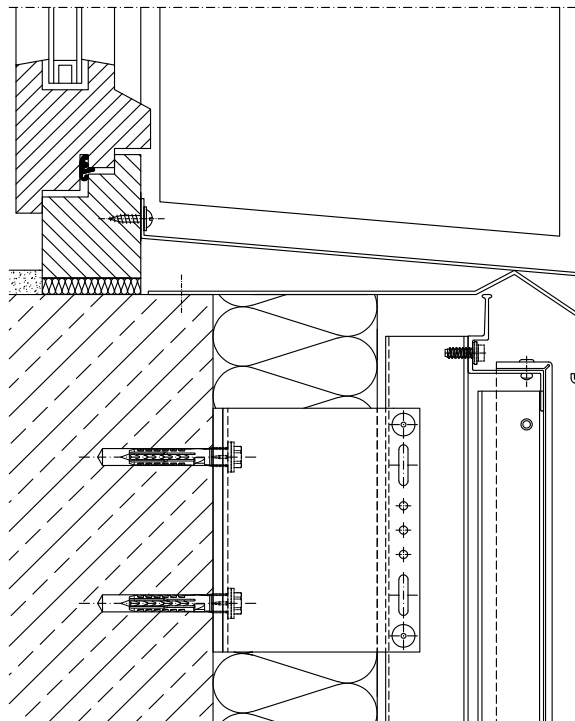
Schnitt 6 Fensterleibung

Section 6 Window embrasure



Schnitt 7 Fensterbank

Section 7 Window sill



Angrenzende Bauteile sind hier nur schematisch dargestellt. Die konkrete Detailausbildung ist unter Beachtung von Normen, Vorschriften und Richtlinien objektbezogen separat zu planen.

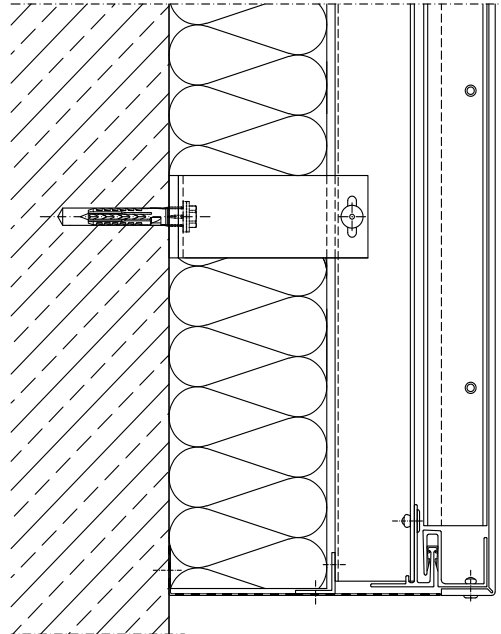
Adjacent components are shown here only schematically. The concrete details are to be planned separately in respect of the particular building involved. This must be done in accordance with the relevant standards, regulations and guidelines.

Schnitte ATK 106 SZ 20

Sections ATK 106 SZ 20

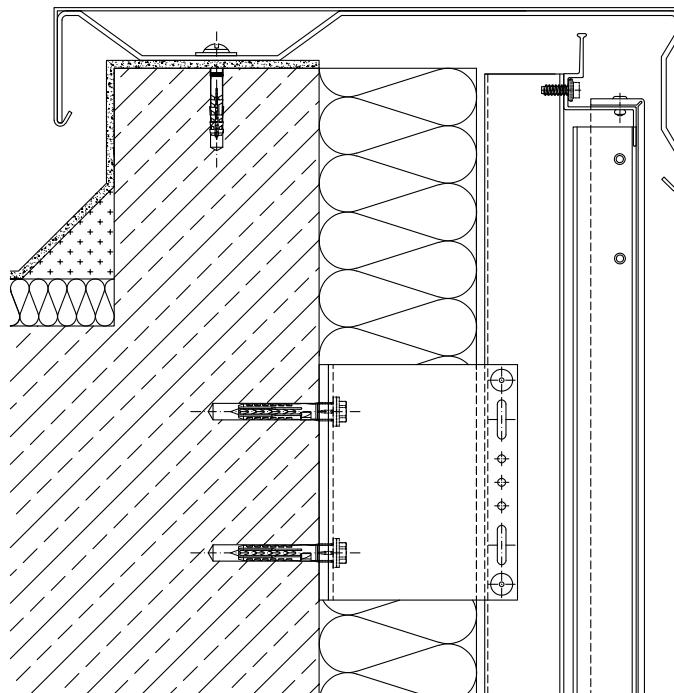
Schnitt 8 Sockelabschluss

Section 8 Lower edge



Schnitt 9 Attikaabschluss

Section 9 Attic connection



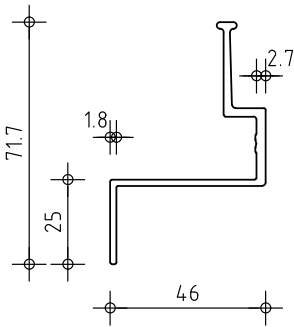
Angrenzende Bauteile sind hier nur schematisch dargestellt. Die konkrete Detailsausbildung ist unter Beachtung von Normen, Vorschriften und Richtlinien objektbezogen separat zu planen.

Adjacent components are shown here only schematically. The concrete details are to be planned separately in respect of the particular building involved. This must be done in accordance with the relevant standards, regulations and guidelines.

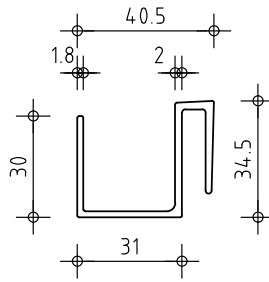
Tragprofile ATK 106 SZ 20

Suport sections ATK 106 SZ 20

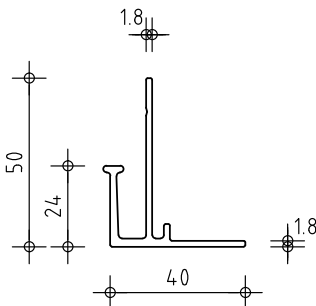
ATK 106 Z-Profil
 ATK 106 Z section
 Art. 663001



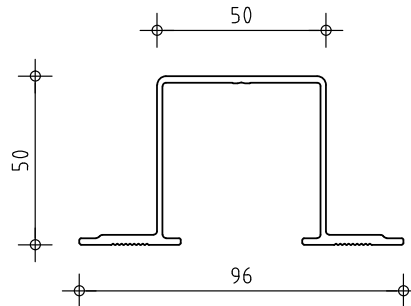
ATK 106 S-Profil
 ATK 106 S section
 Art. 663002



ATK 106 BASIS-Profil
 ATK 106 main section
 Art. 663003



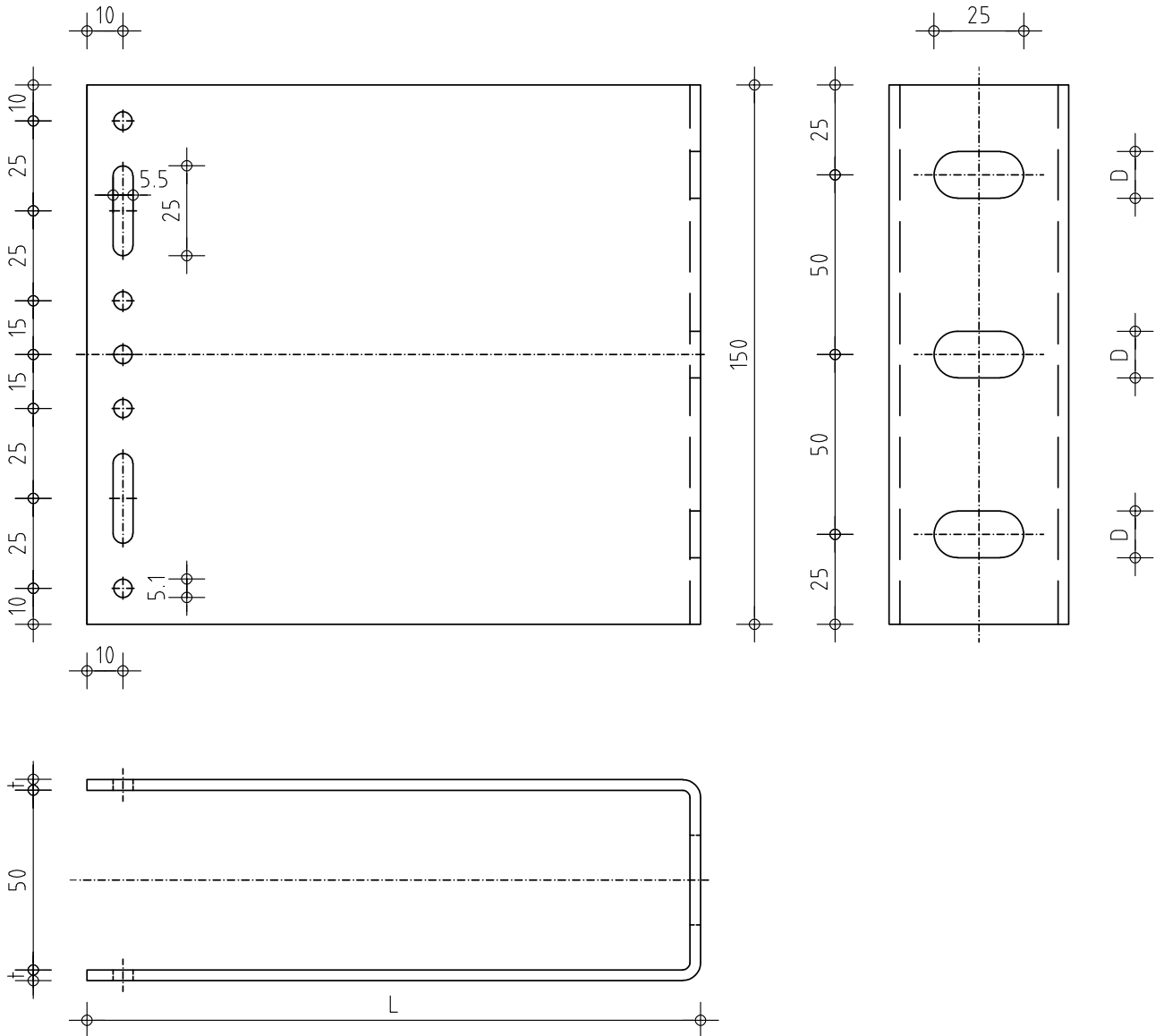
ATK 106 Hutprofil
 ATK 106 hat section
 Art. 663004



U-Halter Typ N-LW 50, Aluminium gekantet

U-Brackets Type N-LW 50, Aluminium bended

Verwendbar als Fest-, Gleit oder Gleit-/Festpunkt
Suitable for fixed and/or sliding points

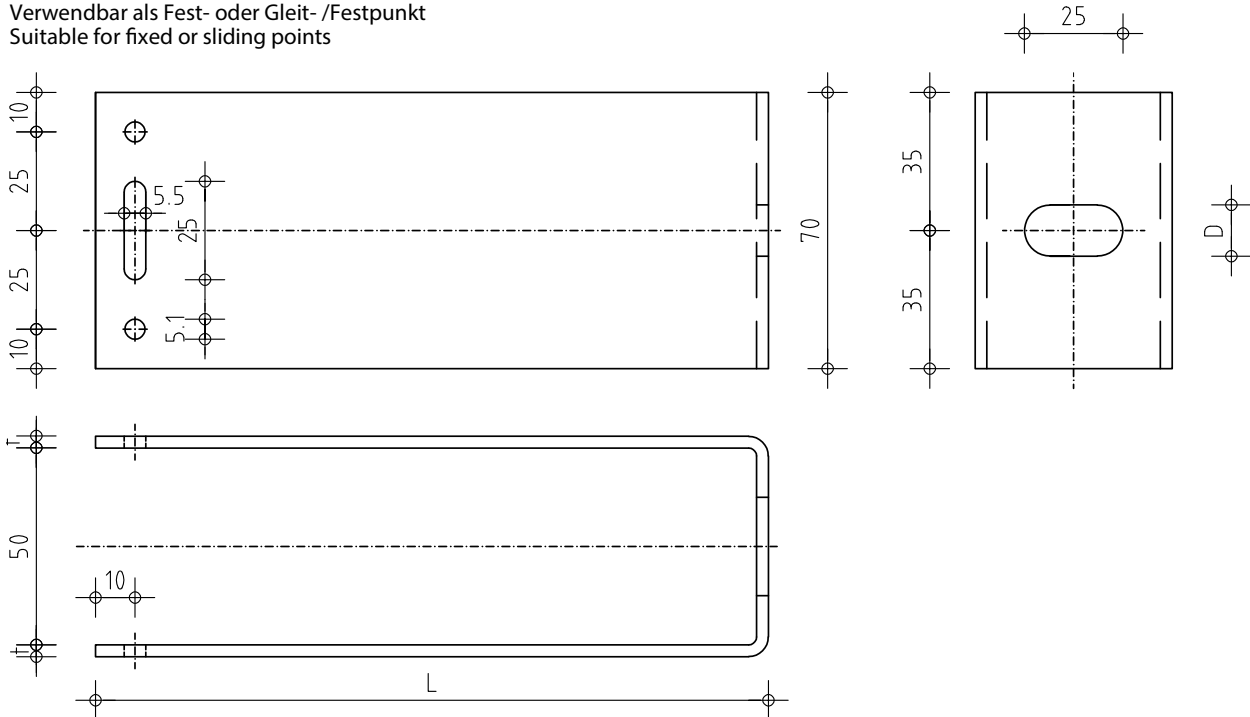


L = 60/ 80/ 100/... / 300/ 320 mm (Weitere Abmessungen auf Anfrage/ on demand)
t = 3/ 4/ 5 mm
D = 11/ 15 mm (Standard/ standard)
D = 13/ 9,0 mm (auf Anfrage/ on demand)
H = 250/ 300 mm (auf Anfrage/ on demand)

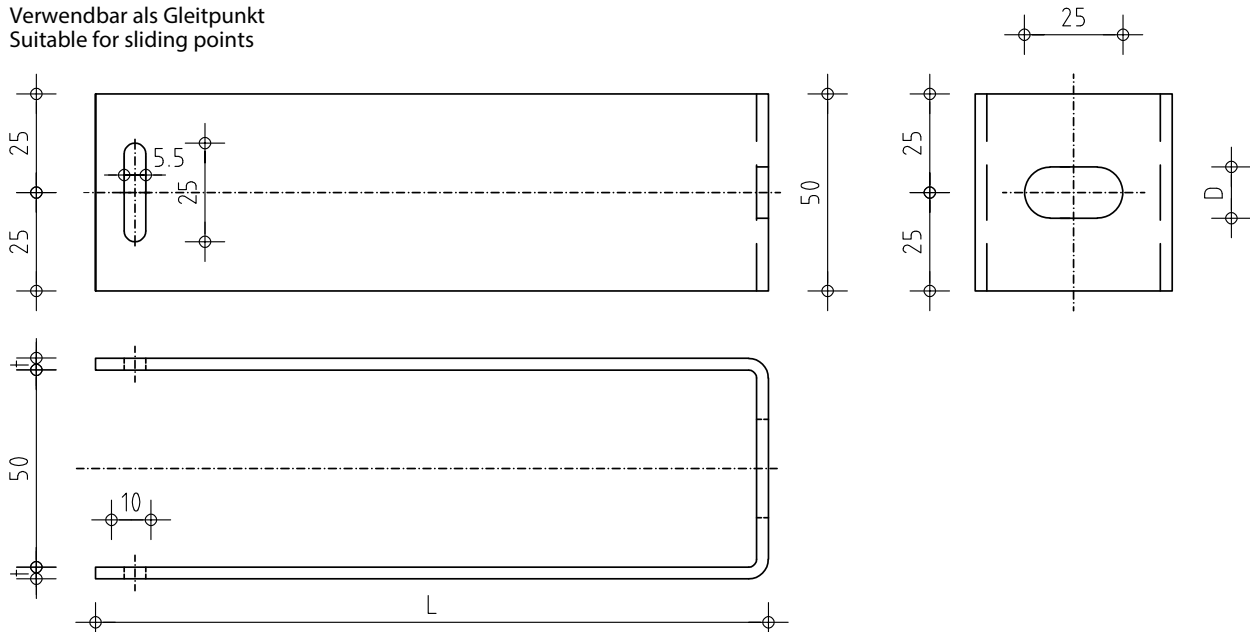
U-Halter Typ N-LW 50, Aluminium gekantet

U-Brackets Type N-LW 50, Aluminium bended

Verwendbar als Fest- oder Gleit- /Festpunkt
Suitable for fixed or sliding points



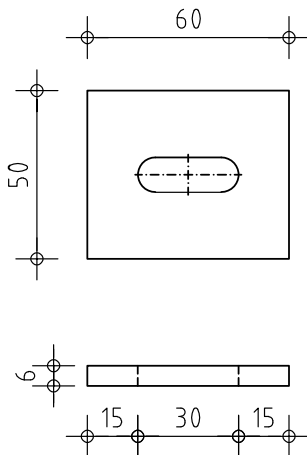
Verwendbar als Gleitpunkt
Suitable for sliding points



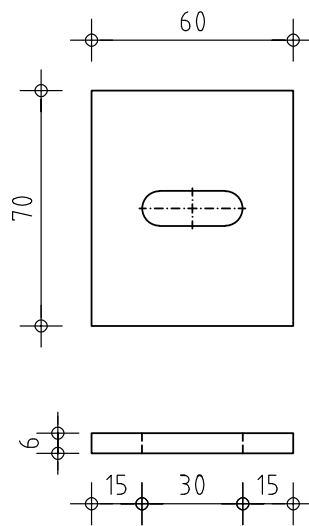
L = 60/ 80/ 100/... / 300/ 320 mm (Weitere Abmessungen auf Anfrage/ on demand)
t = 3/ 4/ 5 mm
D = 11/ 15 mm (Standard/ standard)
D = 13/ 9,0 mm (auf Anfrage/ on demand)

Thermostop (selbstklebend) für U-Halter Typ N

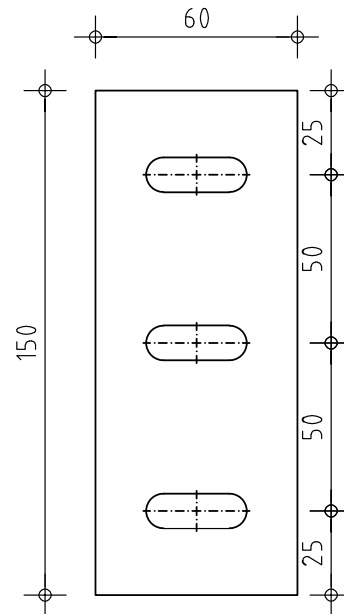
Thermostop (self-adhesive) for U-Brackets Type N



Art. 55050



Art. 55070



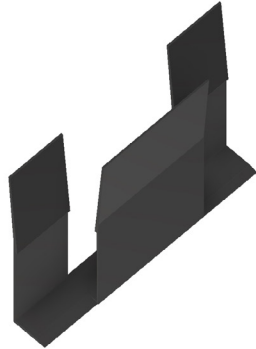
Art. 55150

Andere Abmessungen: auf Anfrage
 other dimensions: on demand

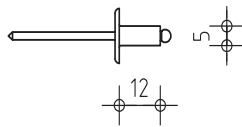
Zubehörteile ATK 106 SZ 20

Accessories ATK 106 SZ 20

Kunststoffclip SZ 20
Clip SZ 20



BWM-Spezialniet SNA 5x12 K 14 Alu-Niro (grün eloxiert)
BWM-Special rivet SNA 5x12 K 14 aluminium-stainless steel (green anodized)
Art. 51214

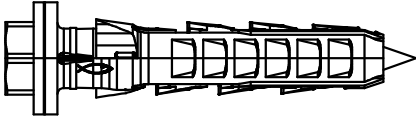


z.B. für U-Halter Typ N
e.g. for U-Brackets type

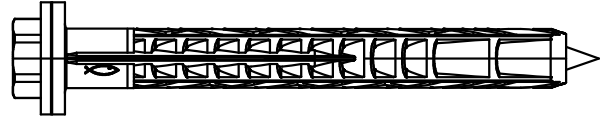
Zubehörteile - BWM-Systemdübel

Accessories - BWM-System wall plugs

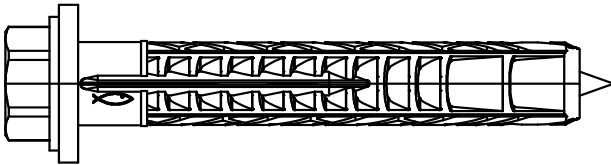
Dübel SXR 10 x L FUS
Frame fixing plug SXR 10 x L FUS



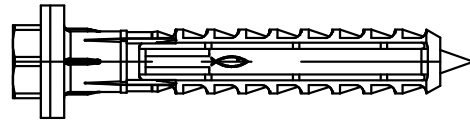
Dübel SXRL 10 x L FUS
Frame fixing plug SXRL 10 x L FUS



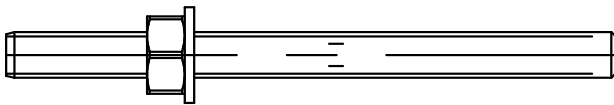
Dübel SXRL 14 x L FUS
Frame fixing plug SXRL 14 x L FUS



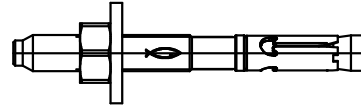
Dübel SXS 10 x L FUS
Frame fixing plug SXS 10 x L FUS



Injektionssysteme FIS / A4
Injection systems FIS / A4



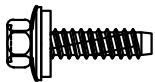
Bolzenanker FAZ II / A4
Bolt anchors FAZ II / A4



Zubehörteile - Weitere Verankerungsmittel

Accessories - Further anchoring elements

z.B. in Stahl / e.g. in steel
Edelstahlschraube EJOT JZ3-Ø 6,3xL-E-16 / e.g. stainless steel screw EJOT JZ3-Ø 6,3xL-E-16
(ETA-10/0200)



z.B. in Holz / e.g. in timber
Bohrschraube EJOT JT3-2-6,5xL-E16 / e.g. self - drilling screw EJOT JT3-2-6,5xL-E16
(ETA-10/0200)



z.B. in OSB-Platte / e.g. OSB timber panel
Bohrschraube EJOT JT3-X-2-6,0xL-E16 / e.g. self - drilling screw EJOT JT3-X-2-6,0xL-E16
(Z-14.4-426)

